

3V700A Series

Application

Embedded Networking / Thin Client application

Features



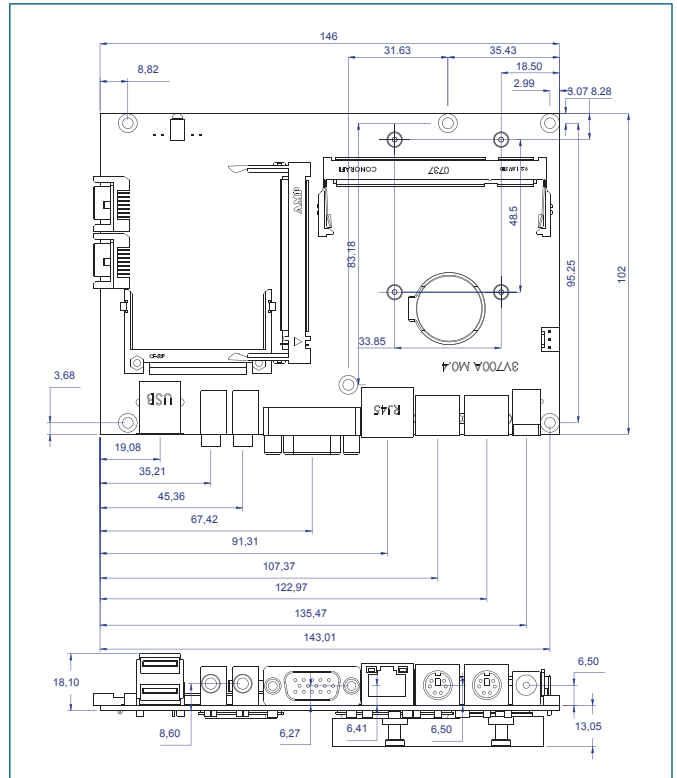
Specifications

- . CPU type: VIA V4 bus processor Eden / ULV
or C7 Nano-BGA2 400 pin L1 128 KB, L2 128 KB on die
- . Front Side Bus: 400 / 533 MHz
- . MB Chipset: VIA CN700 + VT8237R Plus
- . BIOS: Award BIOS
- . Graphics: Integrated with VIA CN700
Shared system memory up to 64 MB
- . Memory: 1 x DDRII SO-DIMM socket (max. 1GB)
Support mixed 64/128/256/512 Mb SDRAM in x8 or x16 configurations
- . IDE: CF Card Type II socket for ATA interface
- . SATA: Support 1 x SATA port. 2 x SATA ports (option)
- . Audio: AC-Link for Audio codec. AC'97 2.1
- . LAN: 1 x Realtek RLT8100C 10 / 100 Mbps
- . IO Function: 2 x RS232 (option)
Support Infrared SIR & FIR
PS/2 keyboard & mouse
- . USB: 8 x USB 2.0 (2 external + 6 internal)
- . Audio Amplifier (option): 6-W / CH Into an 8-Ω Load from a 12-V Supply
Up to 92% Efficient, Class-D operation
Differential Input minimizes Common-Mode noise
- . TV-OUT (option): Support all NTSC & PAL formats.
Resolution : 1024 x 768
- . DIO & WDT (option): Hardware digital Input & Output, 4 x DI / 4 x DO
Hardware Watch Dog Timer, 0~255 sec programmable (option)
- . Expansion interface: 1 x Mini PCI socket (option)
- . Power: On board DC +12V ± 5% convert to +3.3V / +5V / +12V for system
- . Dimension: 145 x 102 mm (3.5 inch)
- . Operation Temp.: 0 ~ 60 °C
- . Operation Humidity: 5~95% @ 60 °C, non-condensing

Ordering Information

- . 3V700A-1R50E: 1 Realtek LAN, VIA V4 Eden 500 MHz CPU
- . 3V700A-1R10U: 1 Realtek LAN, VIA V4 Eden ULV 1 GHz CPU
- . 3V700A-1R15C: 1 Realtek LAN, VIA V4 C7 1.5 GHz CPU

Dimension



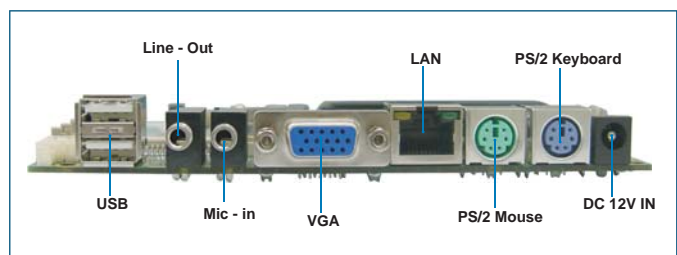
Testing environment

Model name : 3V700A1R10U / 3V700A1R50E
 CPU : VIA Eden ULV 1 Ghz / VIA Eden 500 Mhz
 Chipset : VIA CN700 & VIA VT8237R Plus
 OS : WIN XP
 Testing Program : 3D Mark 2001 SE

Fanless solution with CF card			
Chassis Temperature	UNO	BRIK	
0°C	Pass	Pass	
25°C	Pass	Pass	
45°C	Pass	Pass	
50°C	Pass	55°C	

Fanless solution with 2.5" HDD			
Chassis Temperature	UNO	BRIK	
0°C	Pass	Pass	
25°C	Pass	Pass	
40°C	Pass	45°C	

Back Panel



Please upgrade the hard drive to industrial grade for better temperature performance.