

NEX-8MP

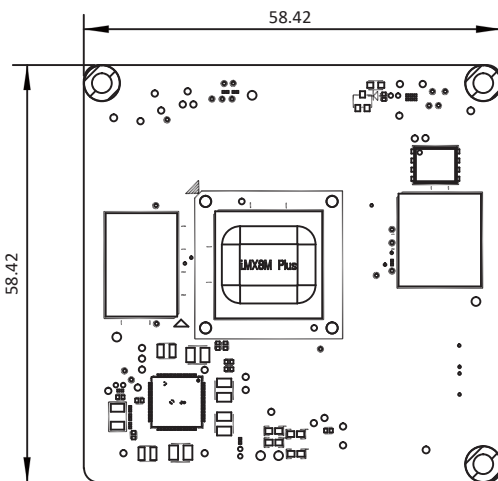
Computer on Module supports
 NXP i.MX8M Plus (Quad core) ARM Cortex-A53 CPU
 HDMI, LVDS, MIPI DSI
 2 x USB, 1 x PCIe 3.0, 2 x LAN, 2 x CSI, 4 x UART,
 3 x I2C, 4 x SAI, 1 x ESPI, 2 x SDHC, GPIO



Features:

- CPU: NXP i.MX8M Plus with Quad core ARM Cortex-A53 processor up to 1.8 GHz
- Memory: LPDDR4, 8GB
- eMMC: 32GB
- Display: HDMI, LVDS, MIPI DSI

Dimensions: (Unit:mm)



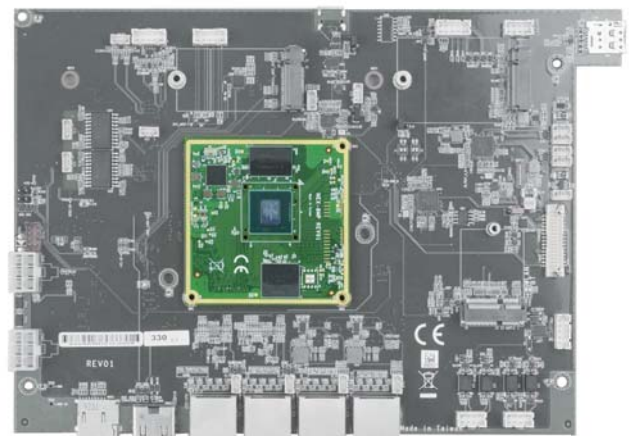
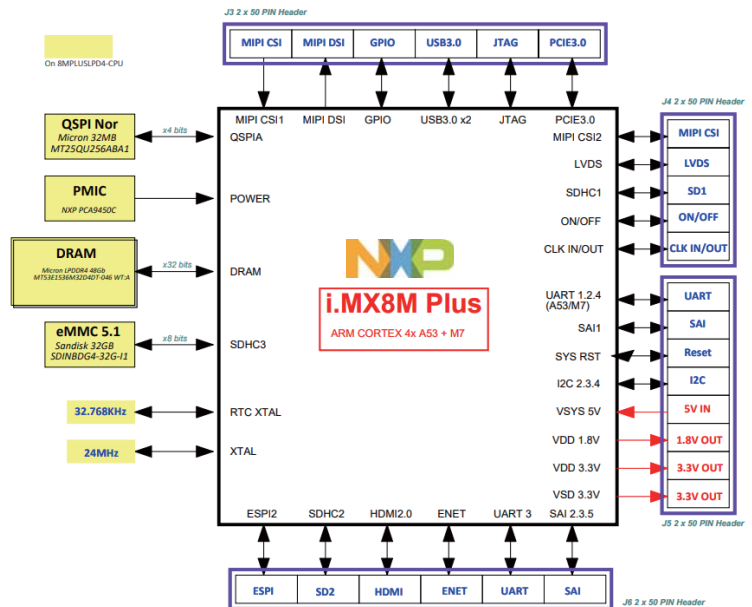
Expansion Interface:

- 2 x USB 3.0, 1 x PCIe 3.0, 2 x LAN
- 4 x UART, 3 x I2C, 2 x SDHC, GPIO
- 2 x CSI, 4 x SAI, 1 x ESPI (TBD) (TBD) (TBD)

- Power Input
DC-5V
- Dimension
58.42 x 58.42 mm

Block Diagram:

IMX8MPLUSLPD4 Block Diagram



▲ Carrier board by ODM design & production.