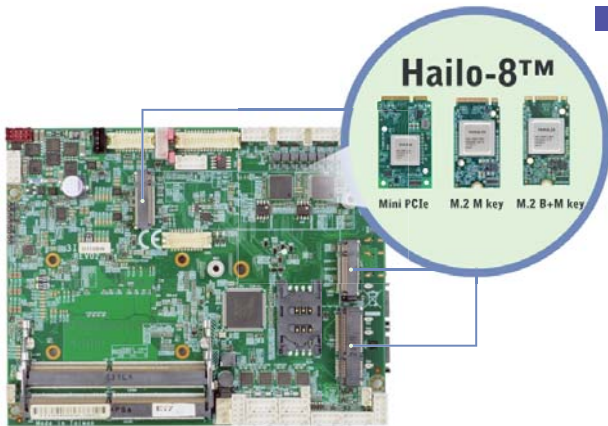


3I110HW + Hailo-8™ AI module

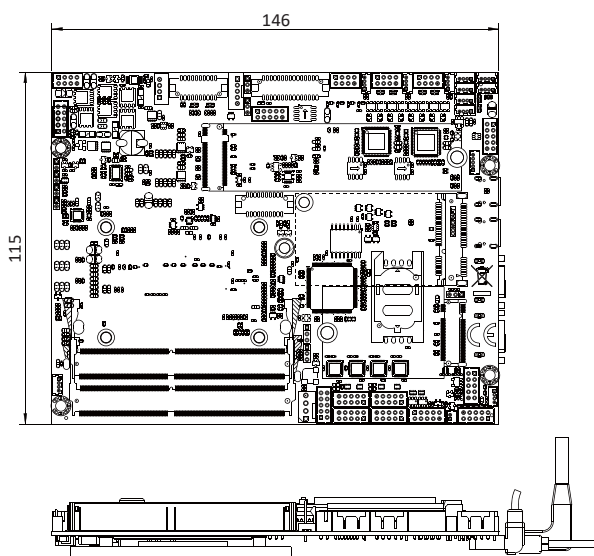
3.5" Plus SBC supports Intel® 11th Gen Tiger Lake-UP3, i7 / i5 / i3 / Celeron CPU, VGA, HDMI (or DP), eDP / LVDS, 3 x Intel Gb Ethernet, Audio, 2 x M.2, Touch Screen controller, 4DI / 4DO, 6 x USB, 4 x COM, 1 x Mini PCIe, 1 x SIM, Battery Charger, SMBus Pre-installed Mini PCIe / M.2 Hailo-8™ AI Accelerator



Features:

- 11th Gen Intel® Tiger Lake-UP3, i7 / i5 / i3 / Celeron CPU
- Pre-installed Mini PCIe / M.2 Hailo-8™ AI Accelerator
- 2 x DDR4 SODIMM (Max. 64GB)
- Multiple Independent display:
VGA, HDMI (or DP), eDP or LVDS
- 3 x Intel GbE LAN, 6 x USB 2.0
- 4 x COM, 4DI / 4DO, 1 x Mini PCIe, 1 x SIM
- 1 x M.2 B Key, 1 x M.2 M Key
- TPM 2.0 (Firmware), SMBus
- Battery Charger Function (3I110BW)
- **OEM Option:**
DP (Type C),
1 x PCIe x1 (Type C*)
*LEX-defined Type C pin configuration

Dimensions: (Unit:mm)



Specifications :

- **CPU**
Intel® Tiger Lake-UP3, i7 / i5 / i3 / Celeron CPU
- **MB Chipset**
Intel® Tiger Lake-UP3 SoC
- **Graphics**
Intel® Iris® Xe Graphics and media encode / decode engine
Intel® UHD Graphics, Support DirectX 12 & OpenGL 4.5
- **System Memory**
2 x DDR4 SODIMM, Max 64GB
- **Storage**
2 x SATA ports 3.0 Data transfer rates up to 6.0 Gb/s (600 MB/s)
1 x M.2 B key Type 3042 (PCIe x2 / mSATA / USB 3.0 / 2.0)-share SATA2
1 x M.2 M key Type 2280 (PCIe x4), Support NVMe
- **BIOS**
AMI UEFI BIOS
- **Display**
1 x VGA, 1 x HDMI (or DP), eDP or Dual Channel, 48 bits LVDS
- **Touch**
USB touch screen controller
- **TPM**
TPM 2.0 (Firmware) ; OEM Optional to Hardware TPM
- **LAN**
1 x Intel GbE I219LM (internal)
2 x Intel 2.5 GbE I225-IT (internal) w/Core CPU or 2X I225-V w/Celeron CPU
- **Audio**
High Definition Audio Specification, Support Line-out / Mic-in / Line-in
Two channel Class D Audio Amplifier
- **Expansion Interface**
1 x Full size Mini PCIe (PCIe / USB 2.0)
1 x M.2 B key Type 3042 (PCIe x2 / mSATA / USB 3.0 / 2.0)
1 x M.2 M key Type 2280 (PCIe x4), Support NVMe
1 x SIM

Expansion Options

CN064	M.2 B key 2242 to M.2 E Key 2230, WiFi 6 + BT
CN067	M.2 B key 2242 to M.2 B Key 2252, 4G / 5G (3.7V by BOM Control)
CN059	USB to Line-out / Mic-in
CC007	USB to 4 port COM
CIO116G	SMBus to 8DI + 8DO
PW351	1 port PoE PSE
PW352	2 port PoE PSE
PW301	802.3AF / AT PD module
PW205	Wide Range power board (9~36V) with power Ignition on/off delay
PW206	12V / 24V DC to DC Redundant Power Board
PW022	Wide Range power board (24V / 48V)
DP001	eDP to VGA
eDP003	eDP to DVI
eDP004	eDP to HDMI
eDP001	eDP to LVDS (OEM)

- **USB**
6 x USB 2.0 (internal)
- **Serial IO**
4 x RS232 / 422 / 485 (internal)
*COM1~COM4 pin9 5V / 12V (Option)
- **GPIO**
Hardware digital Input & Output, 4 x DI / 4 x DO
- **SMBus**
1 x SMBus
- **WDT**
Hardware Watch Dog Timer, 0~255 sec programmable
- **Power Input**
Wide Range +9~36V ; Battery Charger function (3I110BW)
- **Dimension**
3.5" Plus (146 x 115 mm)
- **Operation Temperature (100 % CPU Usage)**
-40°C~+70°C (Core i GRE series CPU)
-20°C~+70°C (Core i G7E / G7 series CPU)
- **Operation Humidity**
5~95%, non-condensing
- **Chassis (OEM I/O Expansion by request)**
Windows® 10 IOT ; Windows® 11 IOT
Ubuntu 22.04 above, Ubuntu 22.04 host OS, Hailo SW via Ubuntu container

Specification are subject to change without prior notice. ODM / OEM is available.