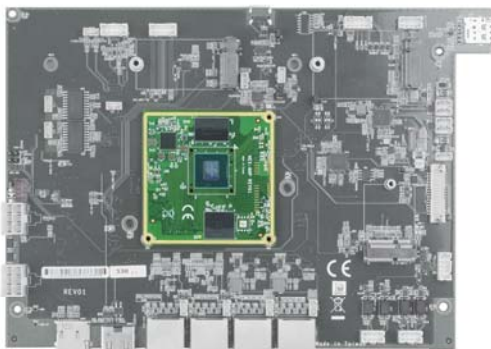


# NEX-8MP

System on module (SOM) supports  
 NXP i.MX8M Plus (Quad core) ARM Cortex-A53 CPU  
 HDMI®, LVDS, MIPI DSI  
 2 x USB, 1 x PCIe 3.0, 2 x LAN, 2 x CSI, 4 x UART,  
 3 x I2C, 4 x SAI, 1 x ESPI, 2 x SDHC, GPIO



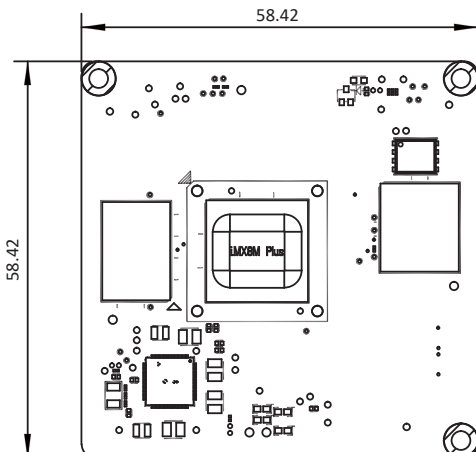
▲ Carrier board by ODM design & production.

## Features:

- CPU: NXP i.MX8M Plus with Quad core ARM Cortex-A53 processor up to 1.8 GHz
- Memory: LPDDR4, 8GB
- eMMC: 32GB
- Display: HDMI®, LVDS, MIPI DSI



## Dimensions: (Unit:mm)



## Expansion Interface:

- 2 x USB 3.0, 1 x PCIe 3.0, 2 x LAN
- 4 x UART, 3 x I2C, 2 x SDHC, GPIO
- 2 x CSI, 4 x SAI, 1 x ESPI

### Power Input

DC-5V

### Dimension

58.42 x 58.42 mm

### OS Support

Yocto mickledore imx-6.1.55-2.2.0\_desktop  
 (Proof of Concept ; POC)

## Block Diagram:

### IMX8MPLUSLPD4 Block Diagram

