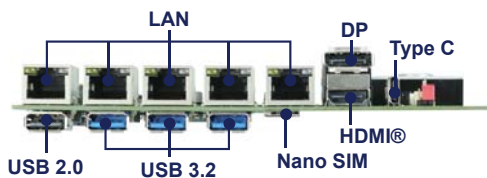
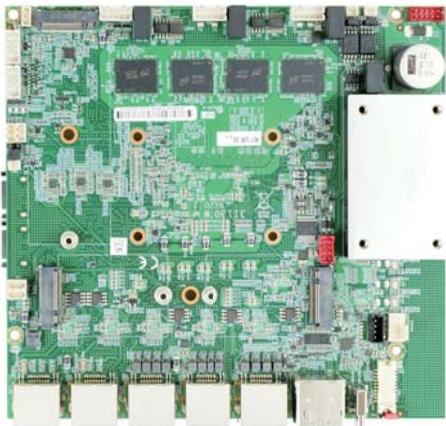


# 3I130TW

## 3.5" Plus Embedded SBC supports

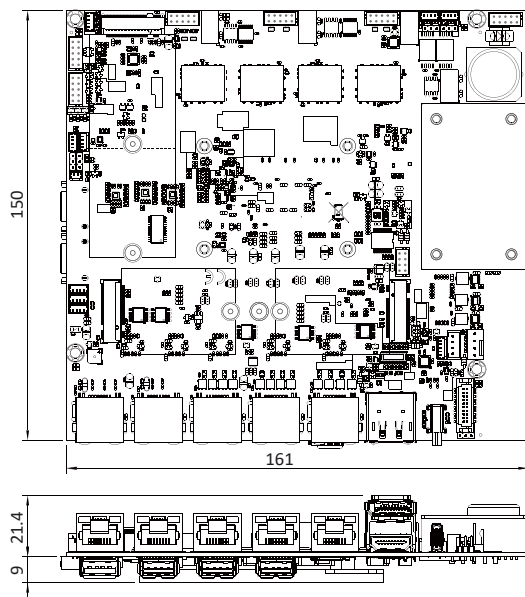
Intel® 13th Gen Raptor Lake-U i7 / i5 / i3, Pentium CPU,  
1 x HDMI®, 1 x DP, 1 x eDP, 1 x Type C, 5 x Intel 2.5Gb Ethernet,  
3 x M.2, 1 x Nano SIM, 4DI / 4DO, 3 x USB 3.2, 4 x USB 2.0, 2 x COM,  
2 x CABus, ISO Wide Range DC-IN, CPC-Ignition on/off control



### Features:

- Intel® 13th Gen Raptor Lake-U i7 / i5 / i3, Pentium CPU
- Onboard LPDDR5, 16GB / 32GB
- Multiple Independent display:
  - 1 x HDMI®, 1 x DP, eDP, 1 x Type C DP ALT Mode
- 5 x Intel 2.5 GbE LAN
- 3 x USB 3.2, 4 x USB 2.0, 1 x Type C
- 1 x M.2 M Key, 2 x M.2 B Key, 1 x Nano SIM
- 2 x ISO COM, 4DI / 4DO, TPM 2.0, SMBus, I<sup>2</sup>C, 2 X ISO CANBus
- ISO Wide Range DC-IN, CPC-Ignition on/off control

### Dimensions: (Unit:mm)



### Specifications :

- CPU
  - Intel® 13th Gen Raptor Lake-U i7 / i5 / i3, Pentium CPU
  - Intel® 12th Gen Alder Lake-U i7 / i5 / i3, Celeron CPU
- MB Chipset
  - Intel® Raptor Lake-U SoC
  - Intel® Alder Lake-U SoC
- Graphics
  - Intel Iris Xe Graphics (i7, i5), Intel UHD Graphics (i3, Celeron)
- System Memory
  - Onboard LPDDR5, 16GB / 32GB
- Storage
  - OEM option-Onboard (256GB / 512 GB / 1TB) NVMe
  - 2 x SATA ports 3.0 Data transfer rates up to 6.0 Gb/s (600 MB/s)
  - 1 x M.2 M key Type 2242 / 3042 / 3080 (PCIe x4), Support NVMe
- BIOS
  - AMI UEFI BIOS
- Display
  - 1 x HDMI®, 1 x DP, eDP, 1 x Type C DP ALT Mode
- TPM
  - TPM 2.0
- LAN
  - 5 x Intel 2.5GbE I226-IT (external)
- Audio
  - High Definition Audio Specification, Support Line-out / Mic-in / Line-in
  - Two channel Class D Audio Amplifier
- Expansion Interface
  - 1 x M.2 B key Type 2242 / 3042 (PCIe x1 / USB 2.0)
  - 1 x M.2 M key Type 2242 / 3042 / 3080 (PCIe x4), Support NVMe
  - 1 x M.2 B key Type 2242 / 3042 / 3052 (USB 3.2 Gen 1 x 1 / USB 2.0)
  - 1 x Nano SIM

#### Expansion Module

CN064	M.2 B+M key 2242 to M.2 E Key 2230, WiFi 6 + BT
CN067	M.2 B key 2242 to M.2 B Key 2252, 4G / 5G (3.7V by BOM Control)
CN059	USB to Line-out / Mic-in
CC007	USB to 4 port COM
CIO116G	SMBus to 8DI + 8DO
PW351	1 port PoE PSE
PW352	2 port PoE PSE
PW353	4 port PoE out (RJ45)
PW354	4 port PoE out (M12)
PW301	802.3AF / AT PD module
PW206	12V / 24V DC to DC Redundant Power Board
PW022	Wide Range power board (24V / 48V)
DP001	eDP to VGA
eDP003	eDP to DVI
eDP004	eDP to HDMI
eDP001	eDP to LVDS (OEM)

- USB
  - 3 x USB 3.2 Gen 1 x 1 (external) ; 1 x Type C, USB 3.2 (external)
  - 1 x USB 2.0 (external) ; 3 x USB 2.0 (internal)
- Serial IO
  - 2 x ISO RS232 / 422 / 485 (internal) ;
  - 2 x ISO CANBus
- GPIO
  - Hardware digital Input & Output, 4 x DI / 4 x DO
- SMBus
  - 1 x SMBus ; I<sup>2</sup>C
- WDT
  - Hardware Watch Dog Timer, 0~255 sec programmable
- Power Input
  - ISO Wide Range DC IN +9~36V ; CPC-Ignition on/off control
  - Wide Range DC IN +18~75V (option), 1.5KVDC I/O isolation
  - power brick 1/4 CQB100W-24S12 9~36V IN / 12V Out 100W(SYS) (Standard SPEC)
  - power brick 1/4 CQB100W-48S12 18~75V IN / 12V Out 100W(SYS) (OEM SPEC)
- Dimension
  - 161 x 150 mm ; Weight: 260g
- Operation Temperature (100 % CPU Usage)
  - 40°C~+70°C
  - (under specific environmental & CPU power consumption conditions)
- Operation Humidity
  - 5~95%, non-condensing
- Chassis (OEM I/O Expansion by request)
  - HAWK
- OS Support
  - Windows 10/11 (64bit)
  - Linux Ubuntu 22.04/Kernel 5.15