

# Company Overview

Founded in 1990 and based in Taipei, Taiwan, Capital US\$3 million.

We're specialize in the design and manufacture of embedded SBC, Box PC, Panel PC, Computer on Modules & add on cards / modules.

Overseas branches and representative offices in Europe, Russia and the China.

Products could be applied to the uses of Machine Vision, Motion Control, Automation, Intelligent Transportation/Railway, IoT/ IIoT, AI & Edge Computing, Video Solution, Rugged and Mobile Computing.

Design and manufacture on our own, OEM/ODM is welcomed!

## Design and Manufacture in Taiwan



**Lex SYSTEM**

# Company Milestones

1993	1990	2002	2004	2007	2011	2012	2013	2015	2016	2018	2019	2020
Sells "Mentor" & "Lex". computer parts in Europe	Founded in Taipei, Taiwan.	Formed embedded system R&D  LEXCOM / Netherlands was founded & in charge of Europe Embedded IPC market .	ISO 9001 & 14000 certified.	Major shareholder of TD Computech for motherboard production	COMPUTEX TAIPEI D&I awards	iF design awards red dot design awards Certified HDMI Adopter	Intel® Internet of Things Solutions Alliance Member	Tiger ( PC PoE Surveillance ) System got the E-Mark Certificate  LEX product got the UL Approval	LEX PICO Express technology patent	Certified of GiGE Vision Systems	Taipei Exchange Center "GISA ( Stock no. 7562)	30 <sup>th</sup> Anniversary






**Lex SYSTEM**

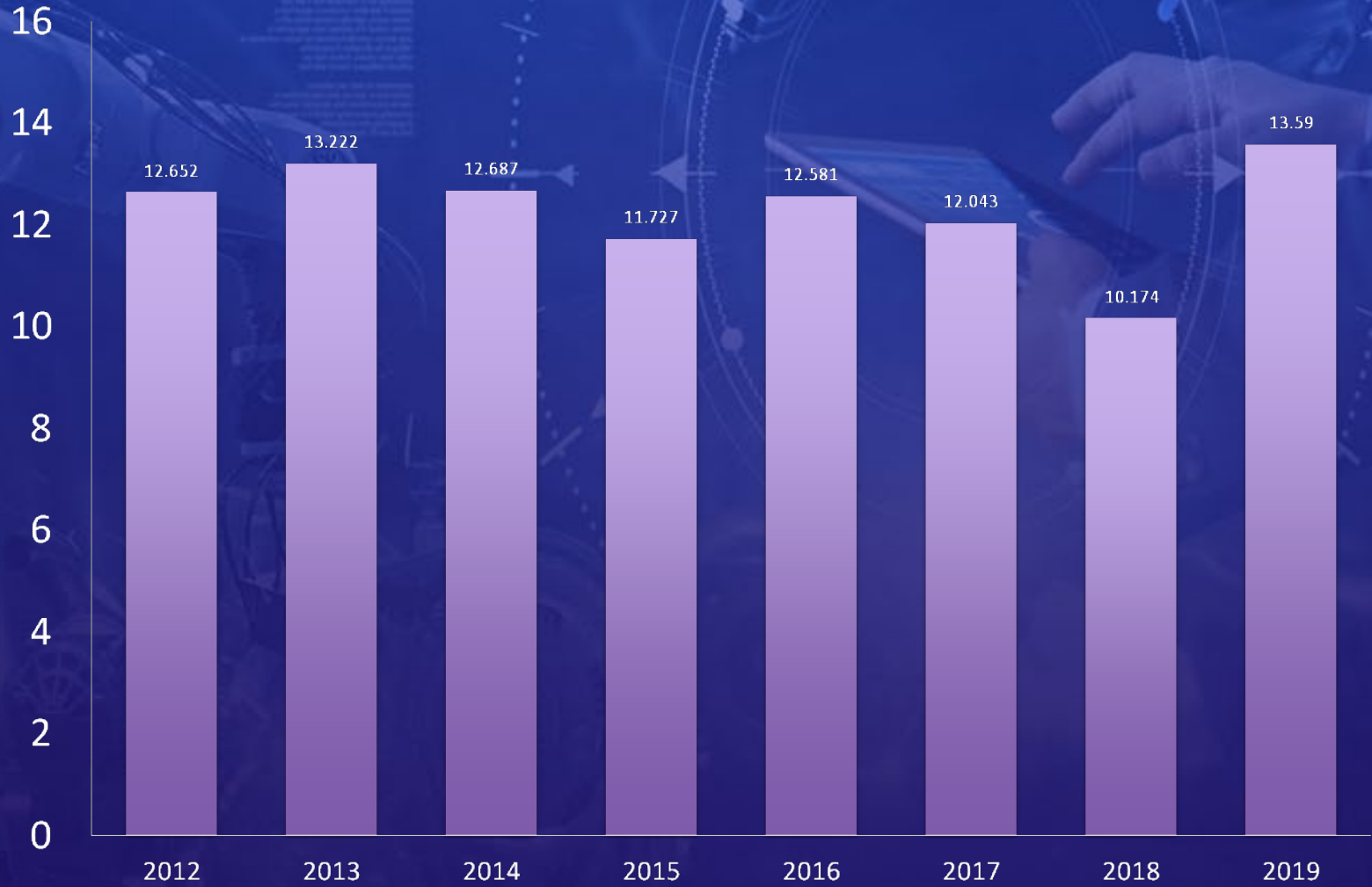
Stock symbol : 7562

# Worldwide Support



-  Headquarters
-  Overseas Branches
-  Representative Office

# Sales Revenue



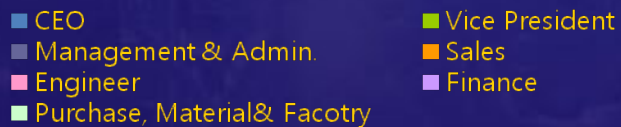
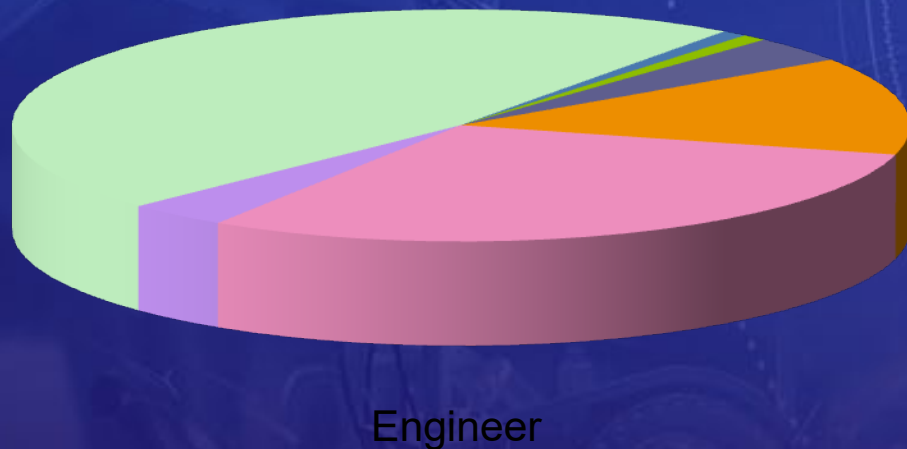
US \$  
Million

# Organization Chart

ORGANIZATION CHART



# Employees Position Information (Taiwan)



Position	Number
CEO	1
Vice President	1
Management & Admin.	4
Sales Dept.	15
Engineer	33
Finance	4
Purchase , Material & Factory	52
Total	110



# **FACTORY** INFORMATION

FACTORY INFORMATION

# Factory Capacity (TD Computech)



- \* 80 % major holder of TD Computech- MB manufacturing factory
- \* Total employee of TD Computech : 108
- \* 3 SMT Lines ( Staff q'ty : 33 )
- \* DIP (Staff q'yt 35 ) : 300 pcs per day



# Assembly Line & testing



- ◆ Shipment & Sample Assembly line
- ◆ Function testing area

# Factory Facilities

Electrostatic Discharge Generator



Aging testing



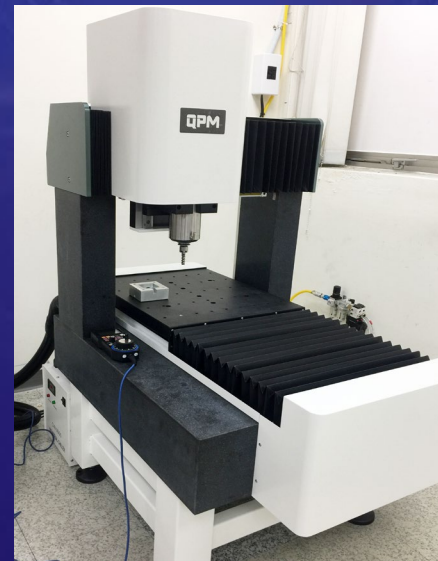
(Panel & Touch )Air leak & lamination test machine



Programmable Temperature Cycle chamber

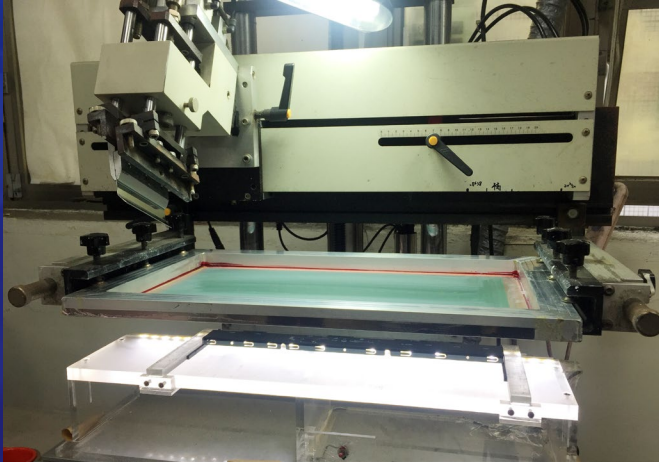


CNC machine



# Factory Facilities

Back panel printing Machine



Laser Cutting Machine



EPE Machine  
Packing protection material



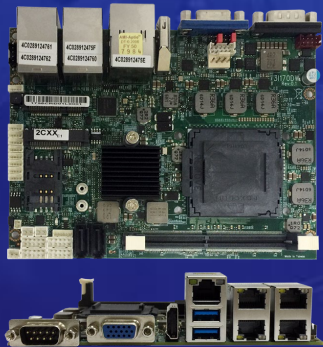


# PRODUCT OVERVIEW

ПРОДУКТ ОЛЕВЛИЕМ

# Product Overview

## Board



### CPU Platform:

- . Intel 9<sup>th</sup>/8<sup>th</sup> Gen Core I
- . Intel 6<sup>th</sup> /7<sup>th</sup> Gen Core I
- . Intel 3<sup>rd</sup> Gen Core I
- . Intel Atom Apollo Lake
- . Intel Atom Bay Trail

### Form factor:

- . Femto-ITX 1.8 inch
- . Pico-ITX 2.5 inch
- . 3.5 inch
- . 5 ¼ inch (200 x 150 mm)
- . Computer on Modules
- . Full/Half size CPU Board

## System



### Dimension:

- . For 1.8 " SBC
- . For 2.5 " SBC
- . For 3.5" SBC
- . For 5 ¼ " SBC
- . For CPU Board

### Feature:

- . Embedded Fanless System
- . Compact & Palm size
- . PCIe expansion
- . Waterproof / Anti-vibration
- . DIN Rail mount /1U Rack mount support.

## Panel PC



- . SUPER PPC (7"/10.1"/10.4"/15.1")
- . VITA PPC (10.1"/15"/21.5"/23.8")
- . Slim PPC (8.4"/10.2"/15.1"/17")
- . SHARK PPC (7"/10.1"/13.3")
- . STAR PPC (10.4"/12.1"/15.1"/21.5")

- . SHARK IP66/67 PPC (10.1"/13.3")
- . STAR IP66/IP67 PPC (10.4"/12.1"/15.1")
- . STAINLESS IP66/IP67/IP69K PPC (10.4"/5.1"/19")

- . SUPER Touch Monitor(7"/10.1"/10.4"/15.1")
- . STAR Touch Monitor(21.5")
- . Touch Monitor(8.4"/10.4"/12.1"/15")

## Add on card & Modules



- . Multi-Ethernet / PoE /Fiber cards
- . Wireless modules
- . Surveillance (Video Capture)
- . USB/SIM/COM/Display Converter card
- . eIO Extension card
- . Storage card
- . Digital IO card
- . Backplanes & Riser card
- . Wide range Power board

# Applications Overview

- Waterproof
- Military , Defense & Aerospace
- Oil, Gas and Water

## Rugged



- In-vehicle Surveillance
- Smart Parking
- Intelligent Transportation
- Fleet Management
- Traffic Control
- Railway

## Vehicle



- Drones/ UAV
- Medical
- Robot Technology
- Mobile Computer

## Industrial IoT



- Access Control
- Building / ATM Monitoring
- Machine Automaton
- Video Analysis
- Video Inspection

## Video



- Machine Vision
- Motion Control
- Smart Factory
- Industry 4.0
- Automated Guided Vehicle

## Automation



- Machine Learning
- Facial Recognition
- Autonomous Vehicle
- Intelligent Video Analytics

## AI & Edge Computing



# Product **Compelling features**

## FLEXIBLE

- Support various expansions
- Easy customized to meet industry requirements

## STABLE

- Extreme Temperature & Anti-Shock Ability
- IP66/IP67 & IP69K Water / Dust Proof

## COMPACT

- Small form factor fanless system
- Ultra compact and slim solution

## INTEGRATED

- Easy Installation without cable
- Multiple platform for efficient development

# CONTACT INFORMATION

**LEXCOM B.V.**  
**(The Netherlands)**

Tel:+31-73-6872390  
Fax:+31-73-6872398  
Email: [info@lex.com.tw](mailto:info@lex.com.tw)

**LEX COMPUTECH CO.,LTD.**  
**(Taiwan Headquarters)**

Tel:+886-2-2228-1055  
Fax:+886-2-2228-1056  
Email: [sales@lex.com.tw](mailto:sales@lex.com.tw)

**LEX COMPUTECH CO.,LTD.**  
**(RUSSIA)**

Tel:+7-906-082-8862  
Email: [anton@lex.com.tw](mailto:anton@lex.com.tw)

**LEX COMPUTECH CO.,LTD.**  
**(Xi'an CHINA)**

Tel:+86-29-86239340  
Fax:+86-29-86239340  
Email: [sales@lex.com.tw](mailto:sales@lex.com.tw)



[www.lex.com.tw](http://www.lex.com.tw)