

LEX COMPUTECH

博來科技股份有限公司

Lex SYSTEM[®]



About LEX

Name LEX Computech CO.,LTD

Established May 15th,1990

Stock Exchange TPEX 7562

Capital USD 6.82 million in 2024

Business Items Industrial Motherboards, Embedded Systems, AI Image Analysis, Smart Cities, Smart Manufacturing, Intelligent Healthcare, Fanless Rugged Panel PC, Smart Transportation ,Edge Computing and Expansion Module Products

Employees 209 (R&D / 31)

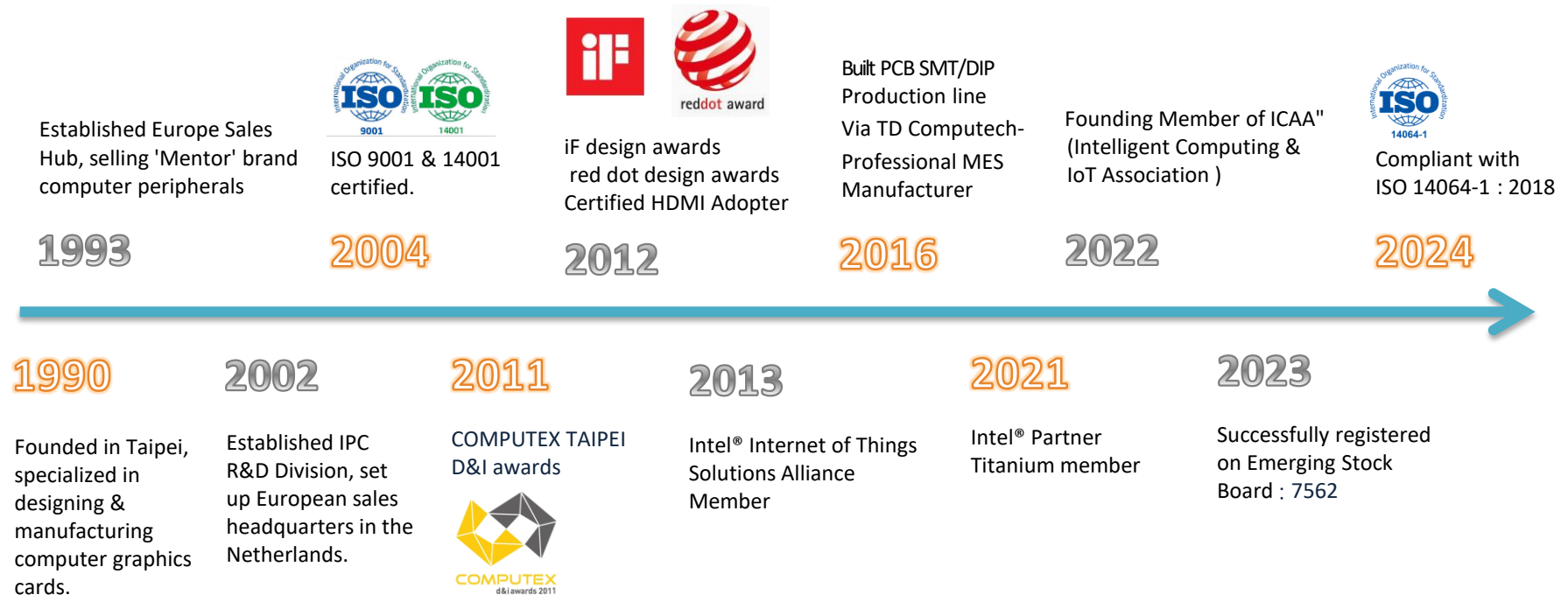
Worldwide Support Headquarters : Taiwan (102)
Subsidiary : Netherlands (9),
TD Computech (98)
Sales Representatives : South Korea

Design and Manufacture in Taiwan

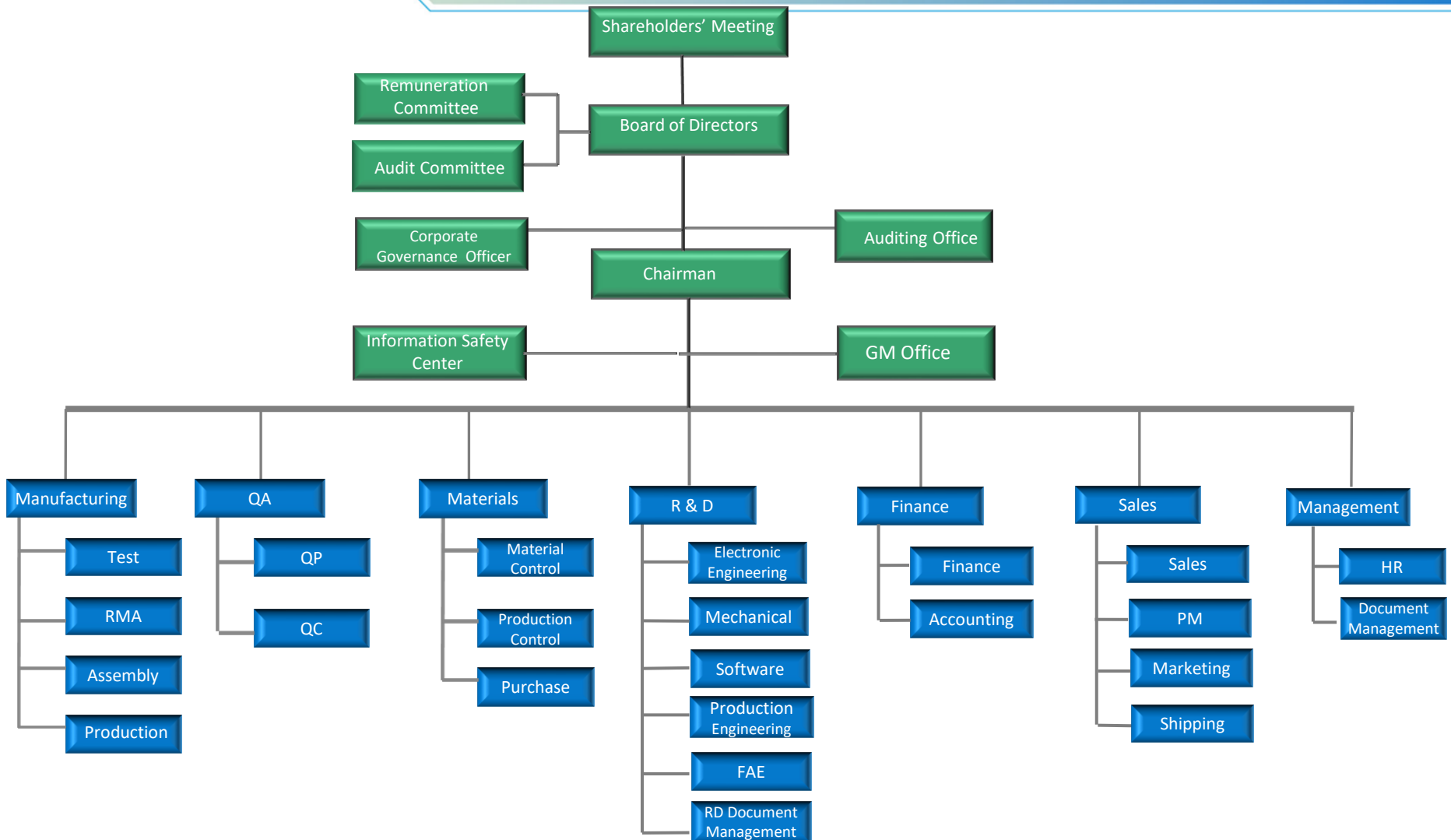
Established in 1990, LEX Computech (TPEX:7562), is a Taiwan-based industrial computer developer and manufacturer with ISO 9001 certification. Headquartered in New Taipei City, it operates R&D, management, sales, and manufacturing units, with additional sales channels in Europe and Asia. LEX Computech 's products hold various patents and certifications for automotive and railway safety and include customized OEM/ODM solutions for industrial computing. It is also a member of the Intel IoT Solutions Alliance.



Company Milestones



Organization Chart

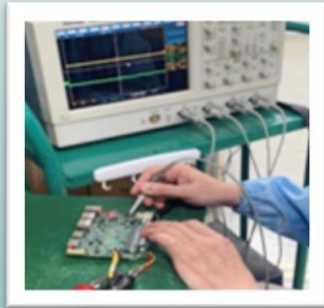


Striving for Excellence

Product Stability and Reliability

LEX SYSTEM holds complete ISO certification, dedicated to delivering high-quality products that meet international standards. With comprehensive quality management from design to production, we provide highly stable and durable products, ensuring exceptional customer satisfaction

■ Digital Oscilloscope



■ Programmable Aging Constant Temperature and Humidity Test Chamber



■ Waterproof and Airtight Testing Machine



■ Burn-in Chamber



■ Vibration Testing Machine



Certification:



MES - Manufacturing Execution System

Professional Motherboard Manufacturing Process

Implementing traceability of production materials and production process through MES could :

- Meet enterprise needs in product management, quality control, equipment integration, problem traceability analysis, and real-time data collection.
- Leverage MES advantages for precise task execution and providing real-time production data access to customers.

SMT

Surface Mount Technology

DIP

Dual In-line Package



ISO9001, ISO14001 Certificated

LEX SYSTEM – Embedded Solution

LEX offers design and manufacturing of industrial motherboards, industrial computers, expansion boards, and customized industrial computers, including edge computing systems and AI intelligent application platforms. Our in-house developed products cover four major categories:



Total :83 pcs

1 Embedded IPC Board

- Femto-ITX 1.8" : 3pcs
- 3.5" SBC :30 pcs
- Computer On Module : 5 pcs
- UPS board : 4 pcs
- Pico-ITX 2.5" : 27 pcs
- 5 ¼" (200 x 150mm) : 4 pcs
- CPU board : 3 pcs
- ARM based : 7 pcs



2 Customized Motherboard & Chassis

Innovating Research & Integration Services for
Global OEM/ODM and System Integrators

• Applications



AI / Visual Analytics



Smart Manufacturing /
Machine Vision



Smart Healthcare/
AI Medical Imaging



IoT / IIoT



Smart Transportation &
Railways



Maritime Shipping
& Navigation



Defense / Military
Robust Computers



Networking/
Communication Equipment



Edge Computing
Edge Gateway Control

LEX SYSTEM – Embedded Solution



3

**Fanless Rugged Panel PC,
Fanless Embedded Systems, Servers**



4

**Expansion Boards/Cards &
Related Accessories**

Fanless Rugged Panel PC



•SUPER series (7"/10.1"/10.4"/15")



•VITA series (10.1"/15"/21.5"/23.8")



•Slim series (8.4"/10.2"/15.1"/17")



•SHARK IP66/67 **waterproof** (10.1"/13.3")



•STAR IP66/67 **waterproof** (10.4"/12.1"/15.1")



•Stainless IP66/IP67/IP69K **waterproof** (10.4"/15.1"/19")

Fanless Embedded System



•Rugged /Waterproof System



•In-vehicle System



•DIN Rail System

•1U server

•AI image Analysis & Machine Vision

•Ultra Compact / Compact System

•High-Speed Ethernet Network Card / PoE / Fiber Card

•4G / 5G / WiFi / Bluetooth Module

•Video Capture Car

•USB / SIM / COM / Display Conversion Card

•M.2 / eIO Expansion Card

•Storage Card

•Digital IO Card

•Carriers and Converter Boards

•Power Boards and Charger Modules

Features & Advantages

LEX SYSTEM's advantage lies in its flexible integration of custom designs and manufacturing, from motherboards and expansion cards to full systems. This flexibility allows LEX SYSTEM to meet diverse customer needs with tailored solutions in embedded computing, Industry 4.0, digital surveillance, mobile medical devices, smart manufacturing, network applications, machine vision, IoT, big data, and AI platforms.



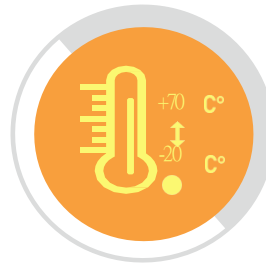
Flexible

Diverse Expansion interfaces and modules for various Vertical Applications



Integration

Accelerating Customer Development Speed for Cross-Platform products



Stable

Wide Temperature, Wide Voltage & Shock Resistance, IP66/IP67 & IP69K Waterproof Design



Innovation

Fanless small Form Factor Embedded tailored products or space-constrained solutions

Future Development

Lex SYSTEMs serve automation, vision analysis, transportation, automotive, 5G, and medical industries. With early RD investment in AI and ARM technology, the EN50155-compliant LEX SYSTEM series delivers AIoT solutions for rail and smart transport, providing customized designs that differentiate LEX SYSTEM in the market and attract clients needing tailored applications.

應用類別 Application :

- 自動化設備 Automation
- 影像視覺分析 Image Analysis
- 交通 Transportation
- 車載 In-Vehicle
- 醫療 Medical
- 5G Networking

EN50155

+70°C
-40°C

E13

Prospects

LEX SYSTEM integrates industrial computing with AI for high-potential markets, focusing on ESG, sustainable growth, and global client attraction. We actively participate in international exhibitions, invest in R&D for smart industries, and recently expanded to South Korea."



ESG Sustainable Development



ESG

SUSTAINABILITY



LEX SYSTEM's ESG sustainable development strategy : **Responsible Management, Smart Future, Digital Talent,** and **Green Operations** will strengthen corporate management, enhance intelligent solutions, educate future digital talent, and achieve sustainable business operations, creating shared value for society.

Highlights Product

13th Gen Intel Raptor Lake Core™ Solution



31130TW 3.5" Plus SBC



HAWK 31130TW



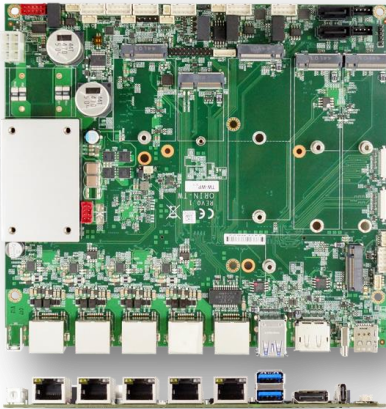
High Performance Computing

Next-gen AI /Railway Solution



JETSON
Orin™ NX

JETSON
Orin™ Nano



ORIN-TW



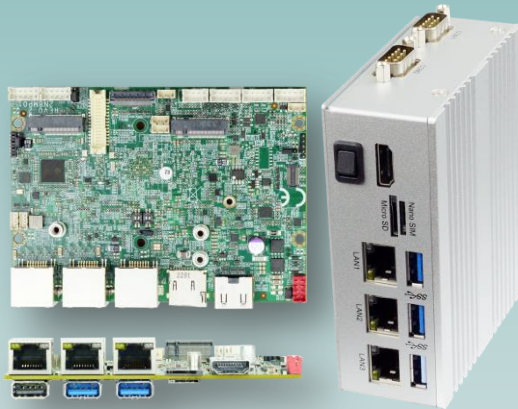
HAWK ORIN-TW



Embedded Edge AI Computing

Next-gen AI Solution

NXP i.MX8M Plus /ARM Cortex-A53



2N8MP01

NET 2N8MP01



Back
With NEX-8MP computer on module

NXP-HAI01

Carrier Board with onboard Hailo AI chip



PALM-NEX01

71.4W x 71.4D x 29.5H mm



Edge AI Embedded System

Smart Manufacturing

HAILO-AI AI Computing Chipset

SKY 2 2I640HL on board Hailo-8 Edge AI processor



Machine Vision

Smart City

Smart Healthcare

Smart Transportation

Smart Retail

Intelligent Manufacturing

Automated Factories

Industry 4.0

Networking Applications

Digital Monitoring

Internet of Things (IoT)



Contact Us

LEXCOM B.V.
(The Netherlands)

Tel: +31-73-6872390
Fax: +31-73-6872398
Email: info@lex.com.tw

LEX COMPUTECH CO., LTD.
(Taiwan New Taipei City)

Tel: +886-2-2228-1055
Fax: +886-2-2228-1056
Email: lex.sales@lex.com.tw

South Korea

Tel: +82-10-5936-4669
Email: yeon@lex.com.tw

Dongguan, China
研毅通电子科技有限公司
(Distributor)

Tel: +86-0512-65993318
+86 18500172031/ +86 13379296808
E-mail: robin@yanyitong.com.cn
E-mail: peter@yanyitong.com.cn

