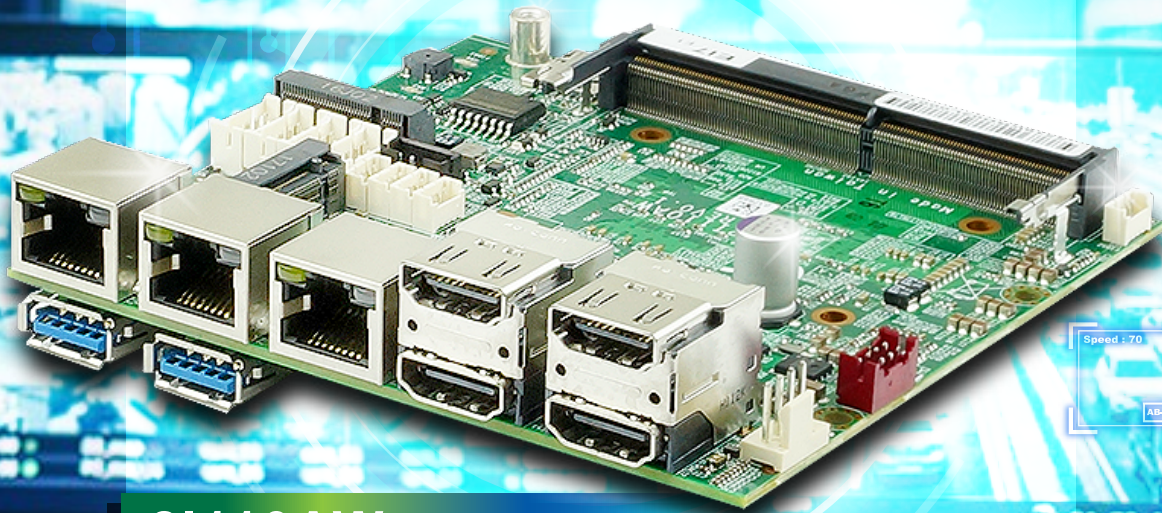


2110AW The compact 11Gen 2.5" SBC Board with 4 independent display for Video Analysis and Edge AI application

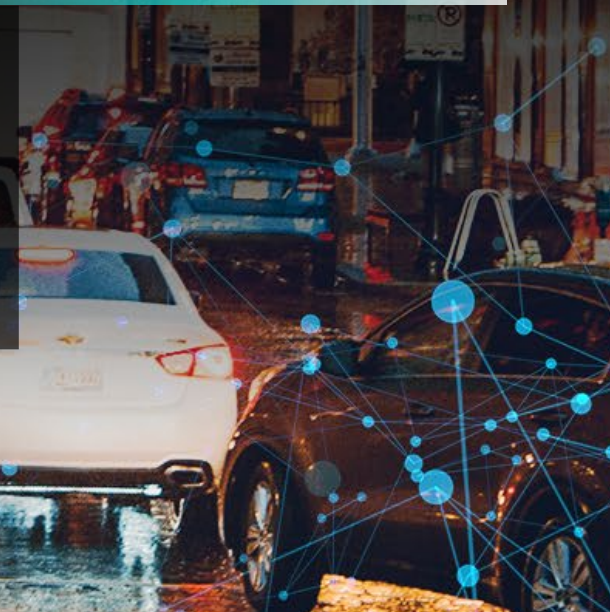
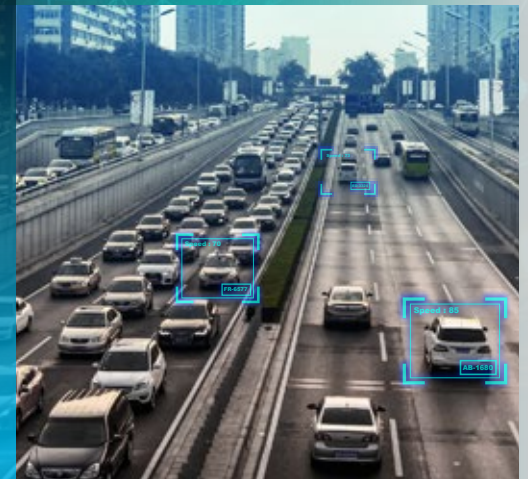


2110AW

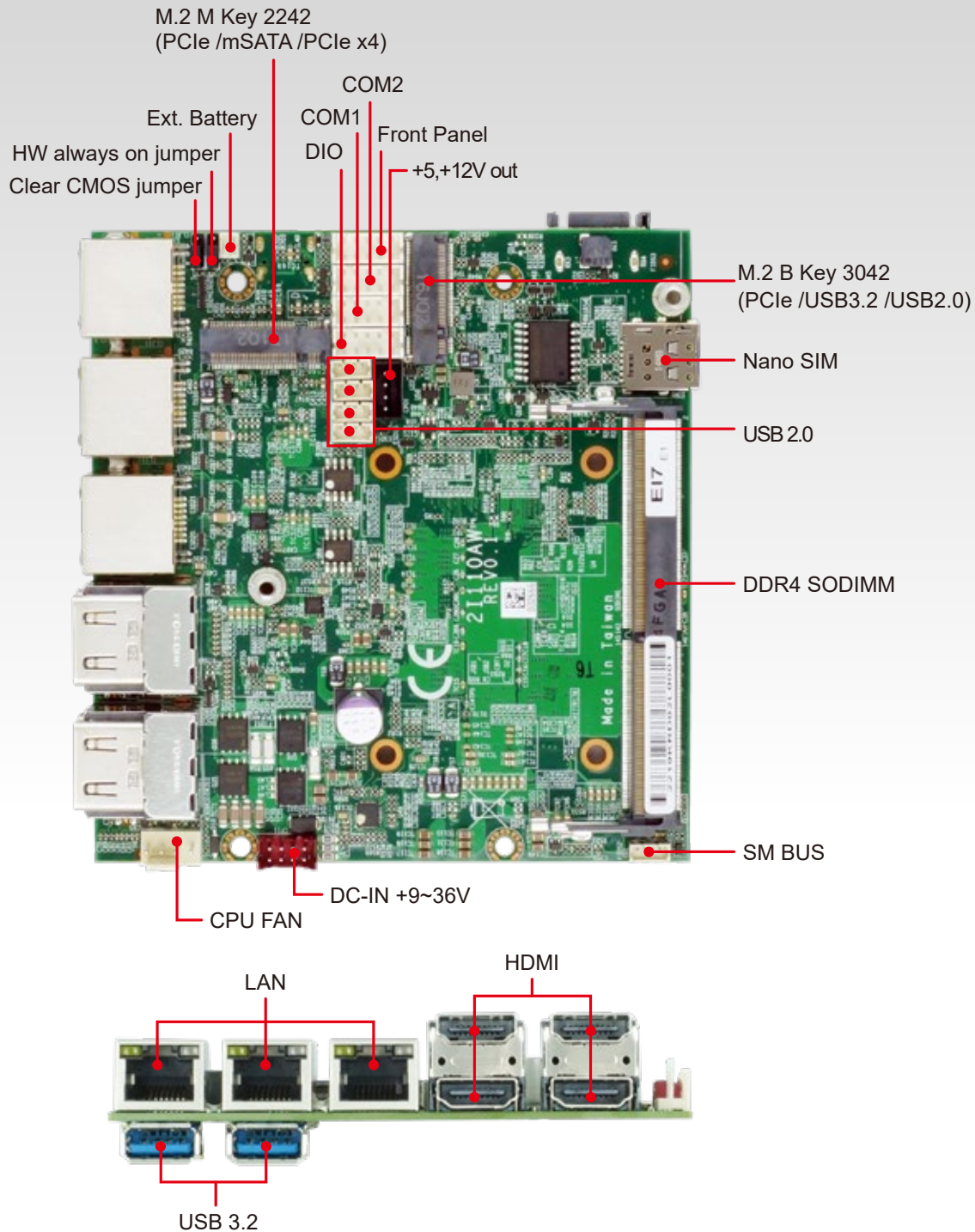
2I110AW The compact 11Gen 2.5" SBC Board with 4 independent display for Video Analysis and Edge AI application



LEX SYSTEM releases 2.5" embedded Board 2I110AW, powered by Intel® 11th Gen Core™ i7i5/i3 Processors supports one SO-DIMM DDR4 up to 32GB of memory. The 2I110AW also supports quad displays up to 4K premium content with four HDMI port via Intel® Iris Xe Graphics technology. On top of these rich features, the 2I110AW is equipped with triple Intel® LAN ports up to 2.5GbE as well as feature-rich IOs and expansion slots, such as two USB 3.0, four USB 2.0, one M.2 M Key , one M.2 B Key , two COM and with 9~36V DC-in power input for versatile and wide-voltage industrial applications. The compact 2.5" form-factor & 4 x HDMI also makes 2I110AW as small and ideal platform for implementing users' AI solutions of smart transportation, Video Analysis and Surveillance applications.



Function Map



2I110AW

2I110AW –compact multiple Display solution for Video Analysis and Edge AI solution

- 11th Gen Intel® Tiger Lake-UP3, i7 / i5 / i3 / Celeron CPU
- 1 x DDR4 SODIMM Max. 32GB
- Multiple Independent display: 4 x HDMI
- 3 x Intel 2.5GbE i225IT LAN, 2 x USB 3.2 (Type A), 4 x USB 2.0,
- 2 x COM RS232/422/485, 4DI/4DO,
- 1 x M.2 B key Type 3042 (PCIe / USB 3.2 / 2.0), 1 x Nano SIM
- 1 x M.2 M key Type 2242 (PCIe x4), Supports NVMe SSD
- TPM 2.0 (Firmware)
- Wide Range DC IN +9~36V
- Operation Temp. : -40°C~70°C (Core i GRE series CPU)
-20°C~70°C (Core i G7E / G7 series CPU)

[Data Sheet](#)

About LEX Comptech

Established in 1990, LEX Comptech is an industrial computer manufacturer, provides LEX SYSTEM embedded solutions include designing and manufacturing of industrial motherboards, fanless embedded systems, rugged panel PC, in-vehicle fanless PC, network appliances, machine vision and automation controllers & IoT related solutions.

LEX SYSTEM's R&D team consisted with electronics, layout, system, mechanical, BIOS, firmware as well as software engineers, plus with experienced project management, in-house manufacturing and after sales service provides ODM /OEM customized products for various application-oriented projects.

Taiwan Headquarters LEX Comptech Co. Ltd

Tel: 886 2 2228-1055
Fax: 886 2 2228-1056
Email:
lex.sales@lex.com.tw
www.lex.com.tw

Europe Sales representative LEXCOM B.V.

Tel: 31 73 687-2390
Fax: 31 73 687-2398
Email:
info@lex.com.tw
www.lex.com.tw

Russia Sales representative LEX Comptech Co. Ltd

Tel: 7 906 082-8862
Email:
anton@lex.com.tw
www.lex.com.tw

China Sales representative LEX Comptech Co. Ltd

Tel: 86 29 8623-9340 Fax: 86 29 8623-9340
Peter
手机: 18500172031 or 13823511963
E-mail: peter@lex.com.tw
Robin
手机: 15829309561 or 13379296808 同微信号
E-mail: robin@lex.com.tw