

3I610DW Series

Industrial Ethernet Appliance 3.5"
Single Board Computer with
Intel® Skylake-U / Kaby Lake-U SoC Processor





Industrial Ethernet Appliance 3.5" Single Board Computer with Intel® Skylake-U / Kaby Lake-U SoC Processor

LEX Computech released of the next generation 3.5" motherboard with wide range 9~36V DC power input & fantastic flexibility and integration with optional eIO (PCIe + USB) expansion Function: 3I610DW is based on the Intel® Skylake-U / Kaby Lake-U i7/i5/i3/Celeron processor, integrated 5 x GbE LAN, 7 x USB, 2 x COM Port and HDMI, DP display interface that offer the ideal platforms for high performance applications in Networking, Smart Automation, Point-Of-Information (POI), Self-Services, In-vehicle, Industry 4.0 and any compact high-performance Internet of Things (IoT) applications.

Function MAP

Audio / Line-In/
Line-Out / Mic-In

Power Switch

Audio Amp

Front Panel
PS2 KB/MS

4DI/4DO
USB2.0

COM2

COM1

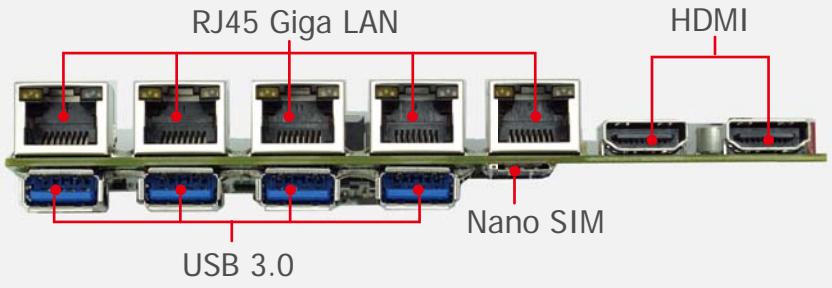
+12V/+5V Output

PCIe/
mSATA / USB

PCIe / USB
with SIM

Support L2L001 / L2L002 /
L2L003 / L2L004 / L2M001
EIO connector

DC IN
Wide Range
+9V~36V



31610DW

Complete solution for Networking & IoT Applications

- Intel® Skylake-U / Kaby Lake-U i7 / i5 / i3 / Celeron CPU / chipset
- 2 x DDR4 SODIMM socket, max. up to 32GB
- Display Interface: 2 x HDMI, eDP
- 5 x Intel (4 x I210 IT + 1 x I219LM) GbE, 2 x Mini PCIe, 1 x Nano SIM
- 7 x USB (4 x USB 3.0/2.0 + 3 x USB 2.0)
- HD Audio
- 2 x COM (RS232/422/485)
- 4DI/4DO, HD audio, Lex eIO: PCIe + USB
- Wide Range DC IN +9~36V
- Wide temperature support of -20°C ~ 70°C
- TPM 2.0 / vPro





TASK + 3I610DW + L2L001



TASK Series

Dimension: 77H x 210W x 125D mm

- Super Excellent heat-dissipating System
- Robust & Powerful Fanless Embedded solution



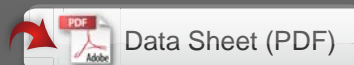


MIRO-3 + 3I610DW

MIRO-3 Series

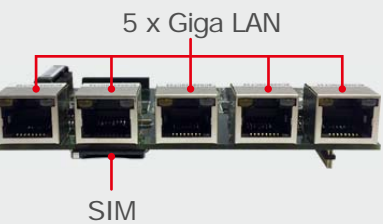
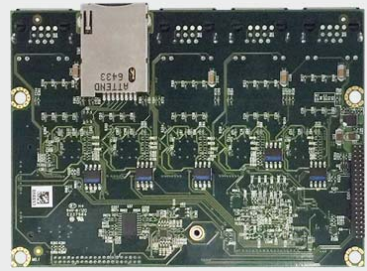
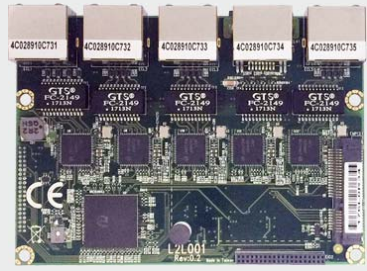
Dimension: 72.9H x 178W x 116D mm

- DIN Rail embedded System
- Robust & Powerful Fanless Embedded solution



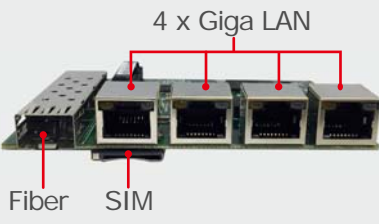
LEX eIO extension card:

L2L001



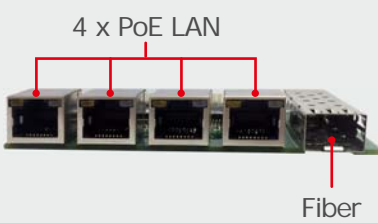
- 5 PCIe Giga LAN
- Intel I210-IT / I211-AT
- 1 Mini PCI Express socket.
- USB and PCIe (Option, share fifth LAN port)
- SIM-Push-Push
- Dimension: 102 x 73mm

L2L002



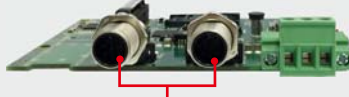
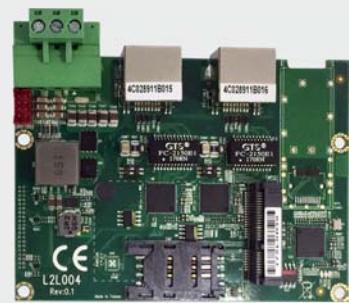
- 4 PCIe Giga LAN
- Intel I210-IT / I211-AT
- 1 port 1000Base-SX Fiber.
- 1 Mini PCI Express socket.
- USB and PCIe (Option, share Fiber LAN port)
- SIM-Push-Push
- Dimension: 102 x 73 mm

L2L003



- 4 x PoE Giga LAN, 1 x Fiber LAN
- Power: Wide Range +9V ~+36V
- Dimension: 102mm x 73 mm

L2L004



- 2 x PoE Giga LAN M12 type
- 1 x Fiber LAN (Optional to 1 x PoE LAN)
- 1 x Full Size Mini card USB interface
- 1 x SIM socket
- Power: Wide Range +9V ~+36V
- Dimension: 102mm x 73 mm

L2M001



- 4 Mini PCI Express socket (full size)
- Support USB and PCIe, SIM-Push-Push
- For option: 2 x USB 3.0
- Dimension: 117 x 73 mm