

LEX PM series CPU boards

APOLLO Lake, Gen 6/7 Core i w/ PCIe x 1/4/16
flexible expansions via configurable PCIe extension cards

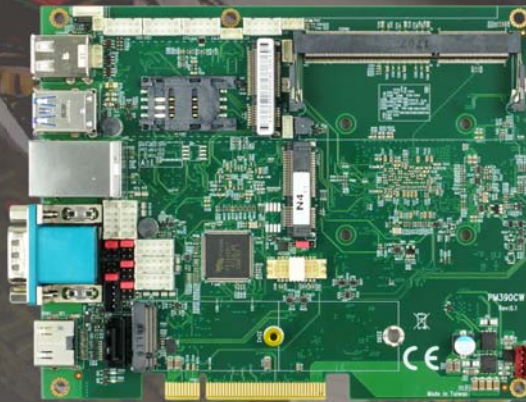
APOLLO



PM Series



Lex SYSTEM[®]



PM390CW



PM610DW

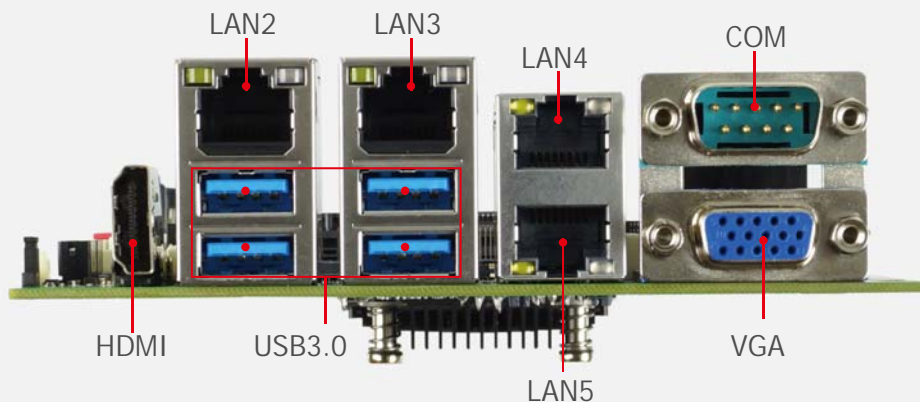
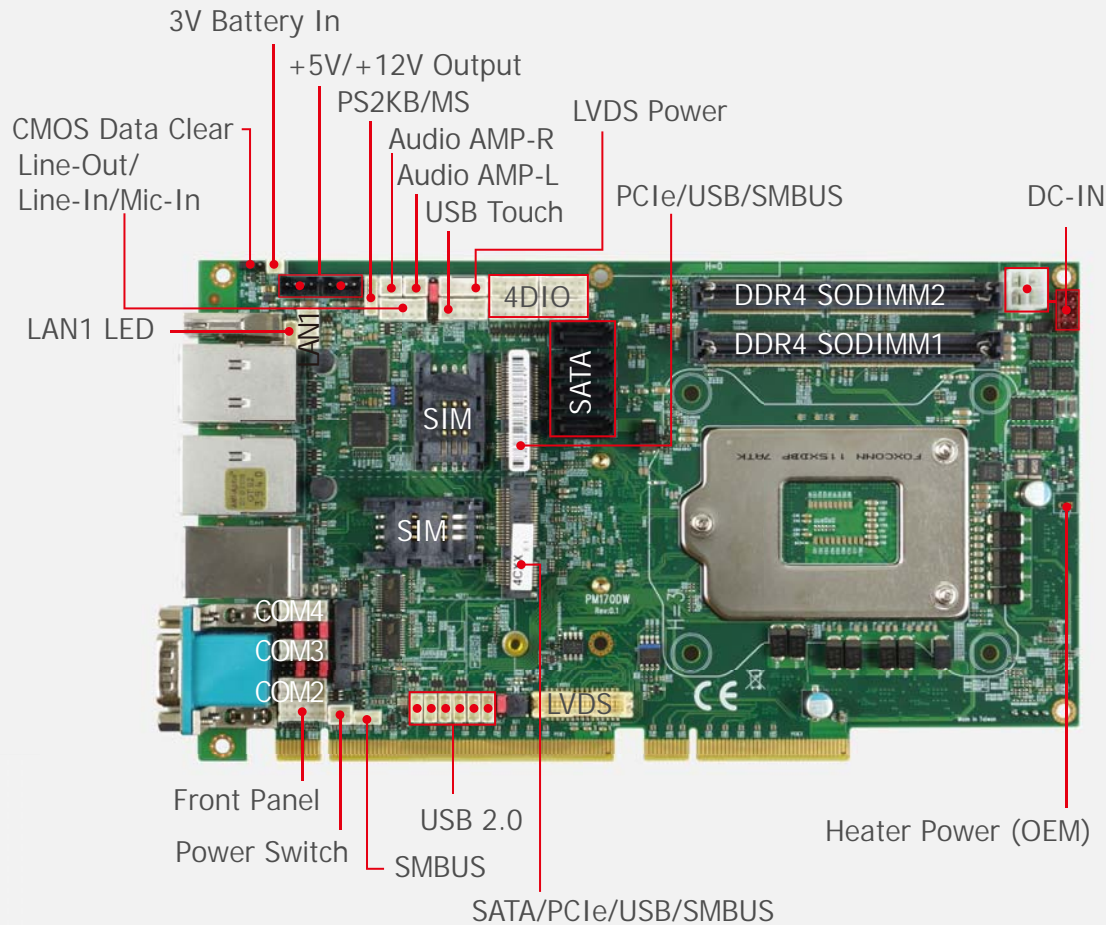


PM170DW

LEX PM series CPU boards flexible expansions via configurable PCIe extension cards

LEX Computech released of the innovative PM series CPU boards which are with fantastic flexibility and integration with PCI Express expansion function. PM170DW & PM610DW are based on the Intel® 6th/7th CPU ; PM390CW is based on Intel Apollo Lake processors, integrated 2~5 x GbE LAN, 4 x USB, 2~5 x COM Port, VGA , HDMI & LVDS (eDP) display interface that offer the ideal platforms for high performance applications. PM series's highly configurability (PCIe x 16, PCIe x 8, PCIe x 4 & PCIe x 1 extension) provide integrators an ideal solution at combination Graphics processing unit (GPU card), Networking (PoE / LAN expansion module), USB connection module & CANBus modules.

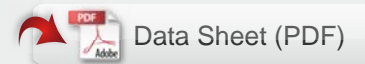
Function MAP



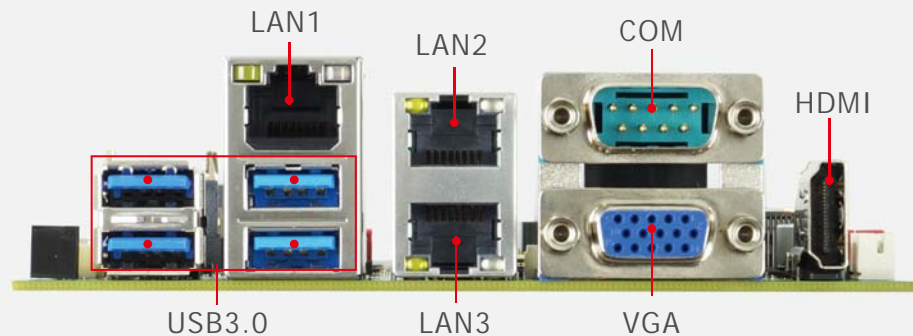
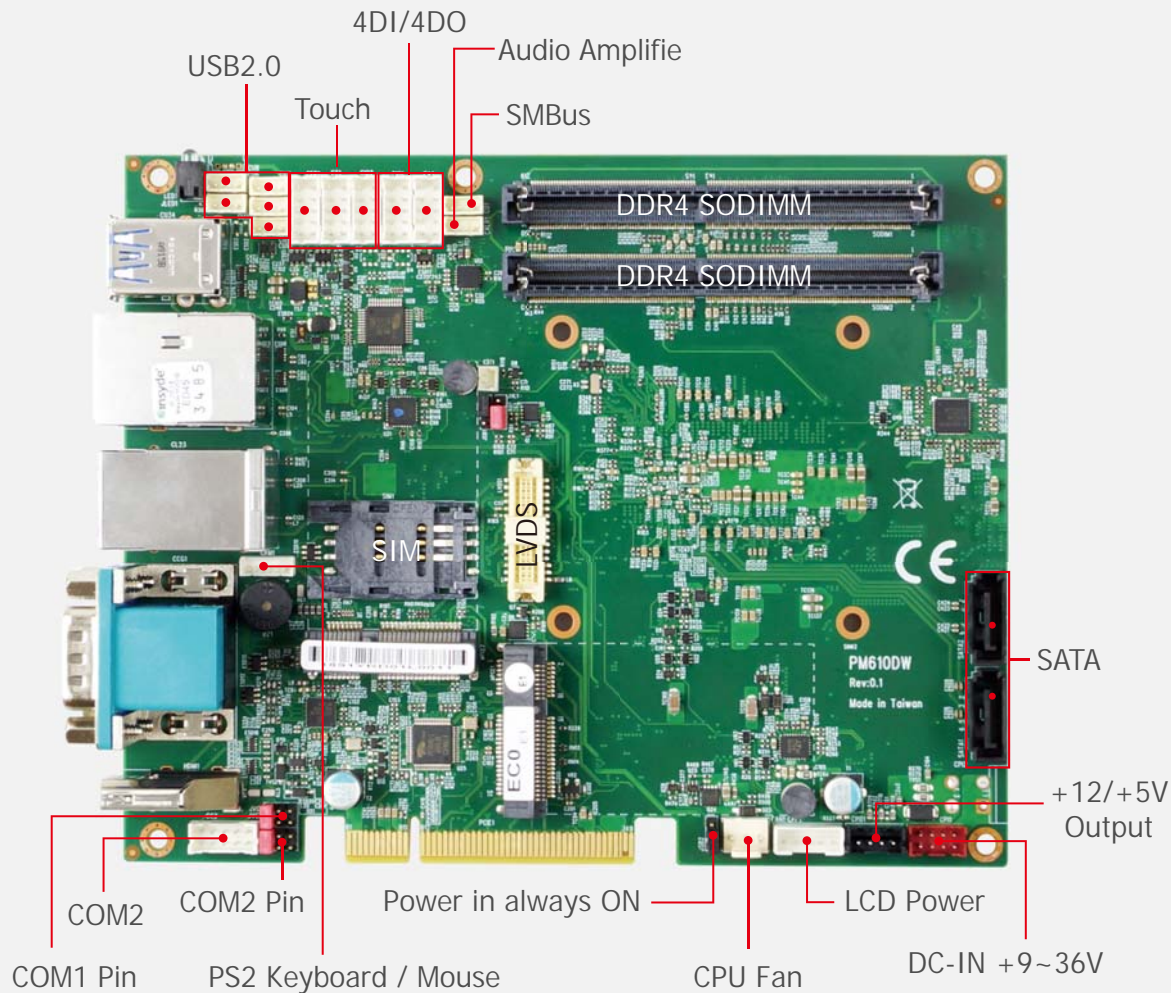
PM170DW

LEX CPU board with Intel Skylake-S / Kaby Lake-S CPU platform

- Embedded Intel® Skylake-S / Kaby Lake-S i7 /i5 /i3 /Celeron CPU
- Intel® Q170 chipset
- 2 x DDR4 SODIMM socket, Max up to 32GB
- Multiple Independent display: HDMI, VGA & LVDS
- 5 x Intel GbE LAN, 4 x USB 3.0, 6 x USB 2.0, 4 x COM, Touch Screen, 1 x M.2
- 2 x Mini PCIe, 2 x SIM card socket, HD Audio, 16DI / 16DO, vPro@ TPM2.0
- PCIe x 16 / x 8 golden finger (PCIe x 16 + PCIe x 4 Signal)
- Wide temperature support of -20°C ~ 70°C



Function MAP



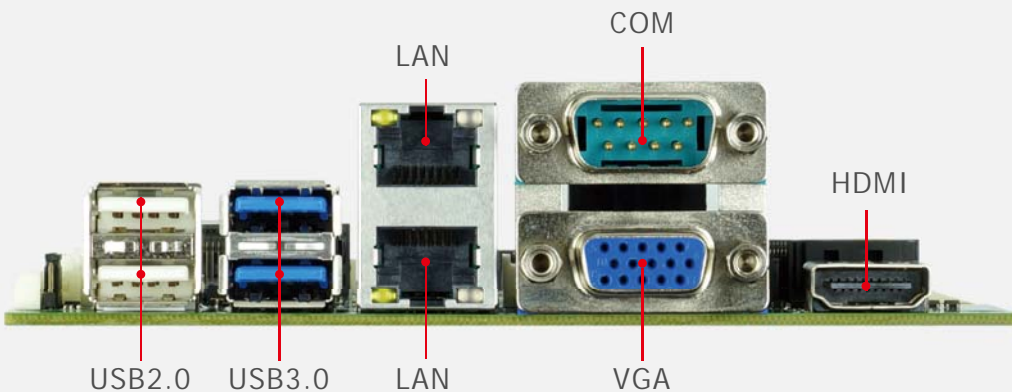
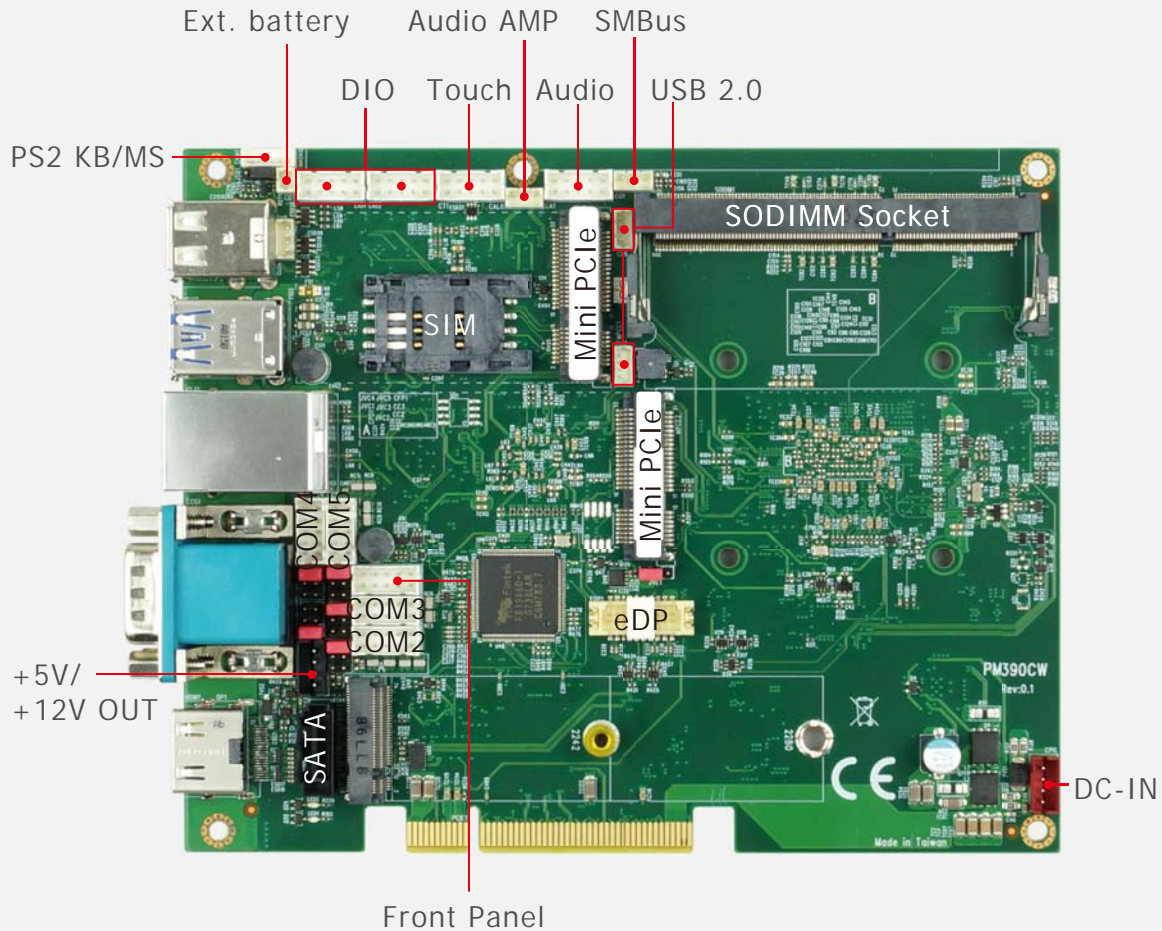
PM610DW

LEX CPU board with Intel Skylake-U / Kaby Lake-U CPU platform

- Embedded Intel® SkyLake-U i7 /i5 /i3 /Celeron CPU / chipset
- 2 x DDR4 SODIMM socket, Max up to 32GB
- Multiple Independent display: HDMI, VGA & LVDS
- 3 x Intel GbE LAN, 4 x USB 3.0, 3 x USB 2.0, 2 x COM, Touch Screen
- 2 x Mini PCIe, 1 x SIM card socket, HD Audio, 8DI/ 8DO, vPro@ TPM2.0
- PCIe x 8 golden finger (PCIe x 4 + PCIe x 1 Signal)
- Wide temperature support of -20°C ~ 70°C



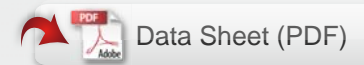
Function MAP

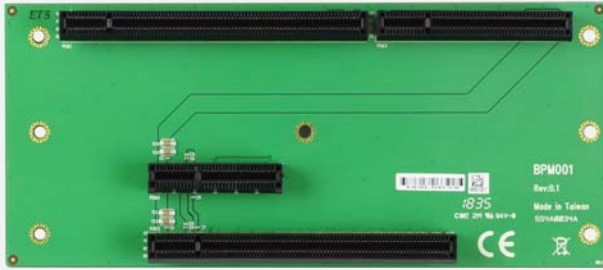


PM390CW

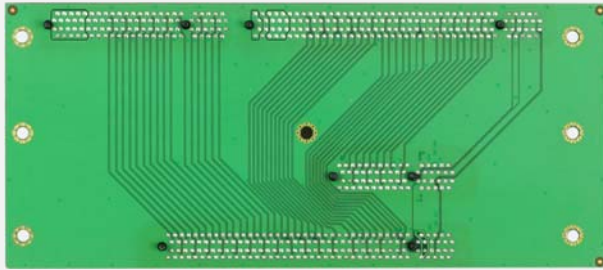
LEX CPU board with Intel Apollo Lake CPU platform

- Intel® Apollo Lake N4200 / N3350 / E3950 SoC CPU / chipset
- 1 x DDR3L 1600 Mhz SODIMM, max up to 8GB
- Multiple Independent display: HDMI, VGA & eDP
- 2 x Intel GbE LAN, 2 x USB 3.0, 3 x USB 2.0, 5 x COM, 1 x M.2
- 2 x Mini PCIe, 1 x SIM card socket, HD Audio, 8DI / 8DO, Touch Screen
- PCIe x 8 golden finger (PCIe x 4 + PCIe x 1 Signal)
- Wide temperature support of -20°C ~ 70°C





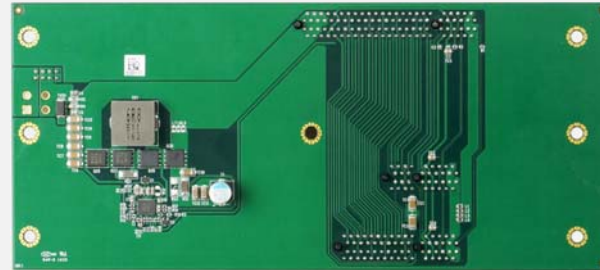
Front



Back



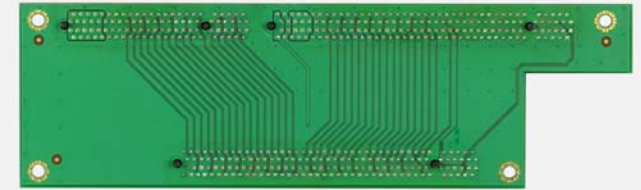
Front



Back



Front

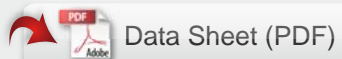


Back

LEX Backplanes

BPM001

- 2-slot: PCIe x 16 + PCIe x 4
(PCIe x 16 / x 8 to PCIe x 16 + PCIe x 4)
- work with PM170DW



LEX Backplanes

BPM002

- 2-slot: PCIe x 1 + PCIe x 4
(PCIe x 8 to PCIe x 1 + PCIe x 4)
- work with PM610DW / PM390CW



Riser Card

RS701

- 1-slot: PCIe x 16
- work with PM170DW



LEX APOLLO configurable system provides full spectrum mechanical solutions (Optional 2/4 * Mobile Rack or CFast by OEM) & Flexibility expand function (PCIe x 16, PCIe x 8, PCIe x 4 & PCIe x 1 Slots) for optional 4~8 PoE / LAN, WiFi, 4G LTE, GPS, Isolated COM, CANBus at less cabling, reduced assembly, complexity and labor cost and all feature IO options to fulfill vertical applications for Machine Vision, Motion Control, gaming, automation, military & industrial facilities.



APOLLO

- Configurable expansion solution
- Robust & Powerful Embedded solution

