

# TERA M12



- wide range (+9V~36V) DC power input
- wide operating temperature range
- vibration resistance
- fanless operating capabilities





In order to meet the requirements of harsh & space limited environments, LEX provides the TERA M12 compact solution platforms deliver advantages in wide range (+9V~36V) DC power input, wide operating temperature range, vibration resistance and fanless operating capabilities.

**Lex** SYSTEM<sup>®</sup>



Front



Back



56.5H x 145W x 101.2D mm

## TERA M12

- CPU/Chipset: Intel Bay Trail-I E3845 1.91 GHz (Quad Core)  
Intel Bay Trail-I E3825 1.33 GHz (Dual Core)
- Memory: DDR3L 1066/1333MT/s, On Board 2 GB/4GB
- Back Panel IO: M12 IO of 2 x LAN, 4 x COM, USB, VGA & power
- Expansion interface: 2x PCIe mini card
- Material: Aluminum ; Weight: 980g
- Storage Space: mSATA
- Dimension: 56.5H x 145W x 101.2D mm
- Power: Wide Range DC-IN +9~36V

# Wireless Module:

## Bluetooth Module



### USB 2.0 (3.3V)

- Bluetooth 2.0 + EDR support
- V1.1, V1.2, V2.0 compliant
- Out-sourced card
- Dimension: 30.61 x 15.02 mm

## 3G / 4G Module



### Mini PCIe Card

- HSPA / UMTS
- Quad-band EDGE / GPRS / GSM
- Dual-band EV-DO / CDMA
- Out-sourced card
- Dimension: 51 x 30 mm

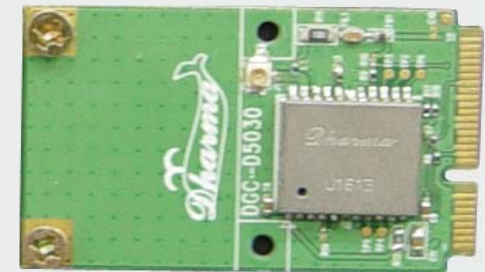
## Wi-Fi Module



### Mini PCIe Card

- 802.11 b / g / n
- Out-sourced card
- Dimension: 50 x 30 mm

## GPS Module



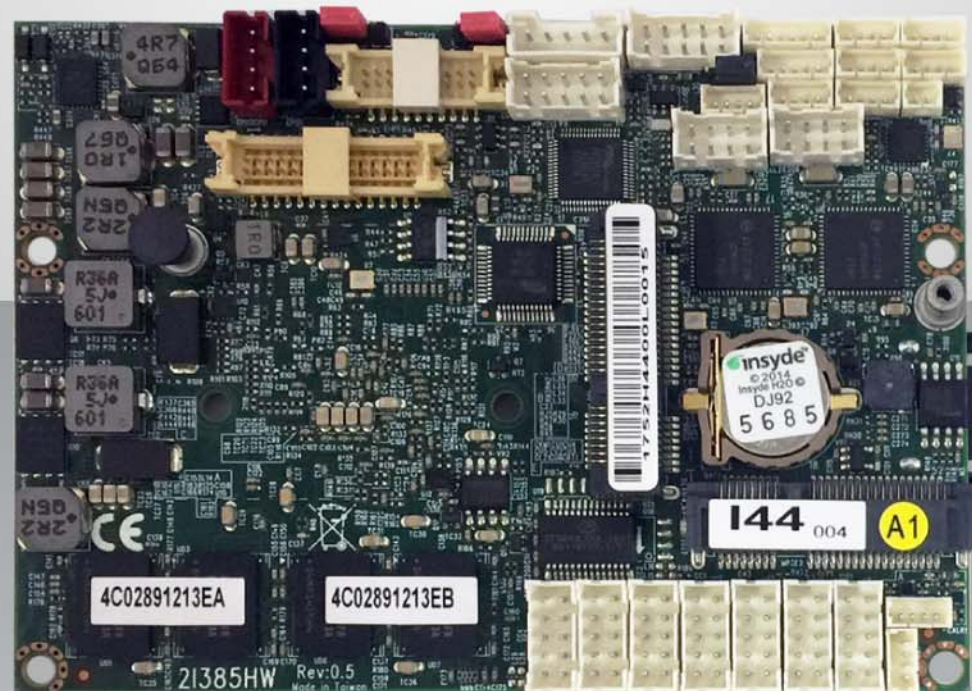
### Mini PCIe Card

- 50 channels
- Out-sourced card
- Dimension: 50 x 30 mm

# Flexible IO expansion

with Pico-ITX Intel Atom™ Bay-Trail Dual / Quad Core E3825/3845 platform

LEX 21385HW SBC is with Intel® Bay Trail (Dual Core / Quad Core) processor to give users fast, convenient and simplified solutions for industrial and embedded applications. This platform with all wafer IO design delivers high flexibility toward expanded functions and also provides user hassle-free solution of integrating the SBC board at various mechanical chassis. The compact size feature makes this platform well suited for many space-limited and thermally constrained embedded applications, such as Automation Control, Transportation, Military, Aquaculture industry, Oceanographic research and POS/Kiosk solution.



# Function MAP



## 21385HW

- Intel® Bay Trail-I E3825 1.33GHz (Dual core) / E3845 1.91GHz (Quad core) CPU / chipset
- MB size 2.5" 102 x 73mm
- Graphic: Intel Bay Trail-I Integrated Graphics chipset
- Memory: DDR3L 2G/4G Onboard
- Features: VGA, eDP, Touch Screen, 2 x Intel Gb Ethernet, 2 x Mini PCIe, 5 x USB, 4 x RS232 (optional to RA485)
- Wide Range +9~36V DC-in

