

Discover more flexibility & shorter development time with **LEX SMART - Computer on Modules**



Intel Bay-Trail platform with full-features Board



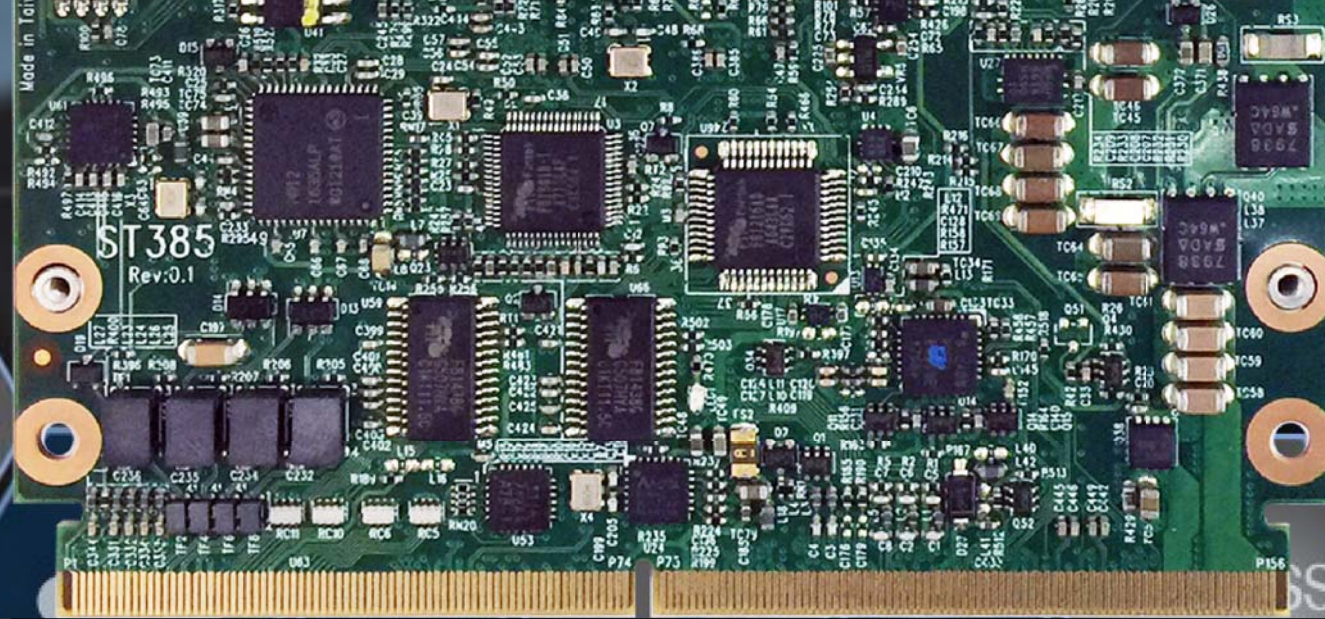
ST385W



ST385W + ST001



ST001



Discover more flexibility & shorter development time with **LEX SMART - Computer on Modules**

LEX launches ST385W Computer on Modules with Intel® Atom™ Bay Trail (Dual Core / Quad Core) processor to give users flexible, reliable and cableless solution for configuring the customized system in the shortest time. By connecting with MXM-3 connectors (314-pin expansion), users can adopt a carrier board with suitable I/O interfaces.

With more flexible and complete functions than COM Express® and SMARC 2.0 options, LEX's SMART-ST385W provide customer the maximize potential with their carrier boards to build their own compact, high-performance system designed in a shortened development time. ST385W's design is also the ideal solution for embedded application developers to get up and running quickly on their customized carrier boards for different OEM/ODM projects.



Front



Bottom



LEX SMART

Computer on Modules

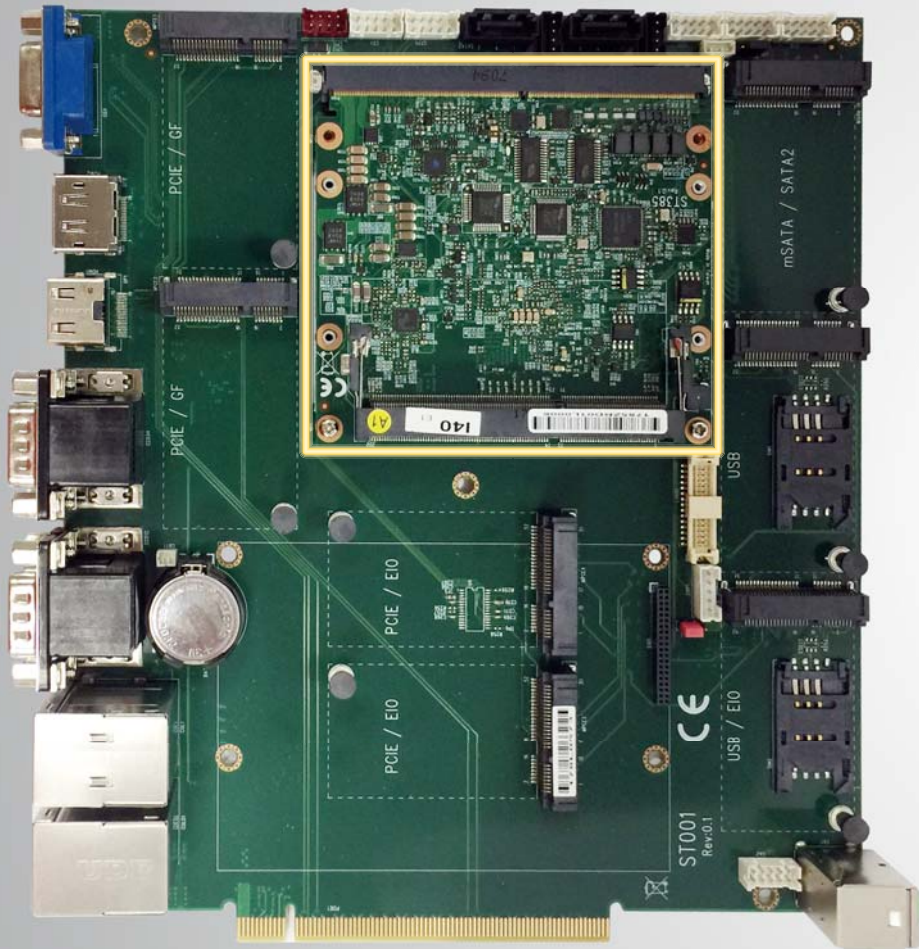
More functions than COMe and SMARC 2.0
Save your time and money to develop carrier board

ST385W

DDR3L SO-DIMM, max up to 8GB	HD Audio with Amplifier
VGA, HDMI or LVDS 24 bit / 2CH	9~36V DC-Input
Resister Touch Screen Controller	5V, 12V DC-Output
2 x Intel GbE i210 LAN	LPC
1 x USB 3.0, 7 x USB 2.0	Watch Dog Timer 0-255 second
4 x COM RS232 / 422 / 485 Auto	Dimension: 82 x 88 mm
2 x PCIe	Operation Temp.: -40°C~75°C
2 x SATA	Operation Humidity: 5~95%, non-condensing
8 x DI / 8 x DO	



Data Sheet (PDF)

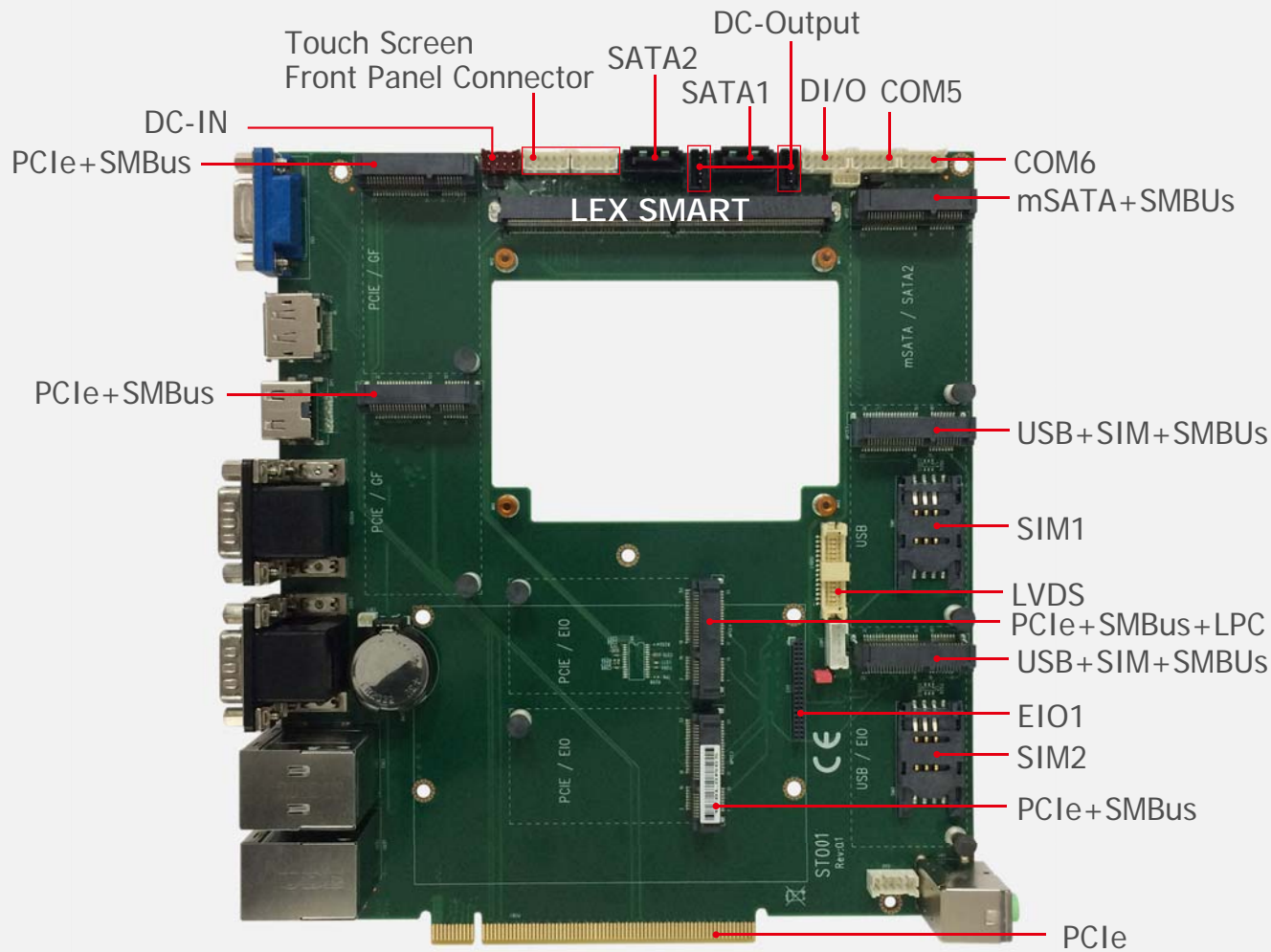


LEX ST001 Evaluation board

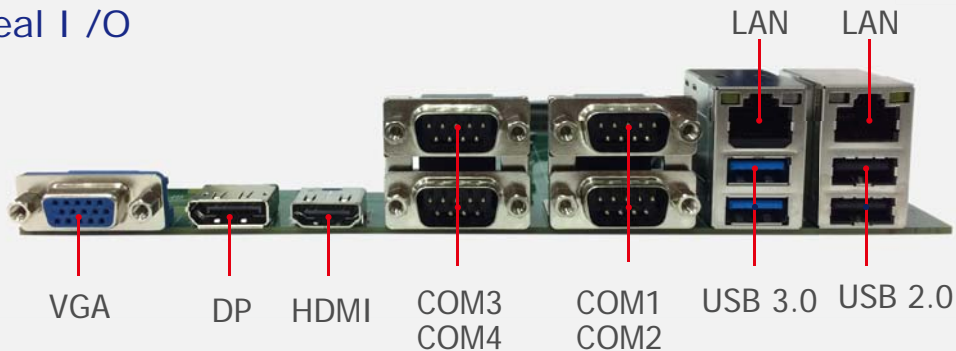
LEX ST001 evaluation board helps customers evaluate the features and performance of ST385W Computer on Module that demonstrate optimized and tested solutions for their application design. In addition to the evaluation, design and testing purposes, ST001 helps customers to expedite their carrier board development.

ST385W + ST001

Function MAP

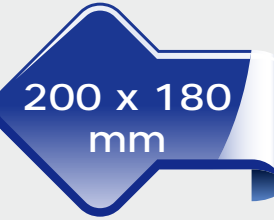


ST001 Real I / O



LEX ST001

Evaluation board



ST001

- Flexible interface for verification
- Expedite customer's evaluation board development
- 200 x 180mm form factor
- Interface:
 - 1 x VGA, 1 x HDMI, 1 x DP, 1 x PCIe x16 golden finger,
 - 7 x mini PCIe, 2 x SIM holder, 2 x USB 3.0, 2 x USB 2.0,
 - 4 x COM, 2 x GbE, Line-out, Mic-in,
 - PWR / HDD / LAN LED (wafer)

